

## Anti-RAB3GAP2 Antibody

Catalog Number: A07244

### About RAB3GAP2

Regulatory subunit of a GTPase activating protein that has specificity for Rab3 subfamily (RAB3A, RAB3B, RAB3C and RAB3D). Rab3 proteins are involved in regulated exocytosis of neurotransmitters and hormones. Rab3 GTPase-activating complex specifically converts active Rab3-GTP to the inactive form Rab3-GDP. Required for normal eye and brain development. May participate in neurodevelopmental processes such as proliferation, migration and differentiation before synapse formation, and non-synaptic vesicular release of neurotransmitters.

Nagano F., J. Biol. Chem. 273:24781-24785(1998).

Xu X., Submitted (MAY-2000) to the EMBL/GenBank/DBJ databases.

Nagase T., DNA Res. 5:355-364(1998).

### Overview

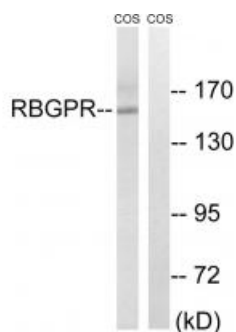
Product Name	Anti-RAB3GAP2 Antibody
Reactive Species	Human, Mouse
Description	Boster Bio Anti-RAB3GAP2 Antibody (Catalog # A07244). Tested in WB, IHC applications. This antibody reacts with Human, Mouse.
Application	IHC, WB
Clonality	Polyclonal
Formulation	Rabbit IgG in phosphate buffered saline (without Mg <sup>2+</sup> and Ca <sup>2+</sup> ), pH 7.4, 150mM NaCl, 0.02% sodium azide and 50% glycerol.
Storage Instructions	Store at -20°C for one year. For short term storage and frequent use, store at 4°C for up to one month. Avoid repeated freeze-thaw cycles.
Host	Rabbit
Uniprot ID	Q9H2M9

### Technical Details

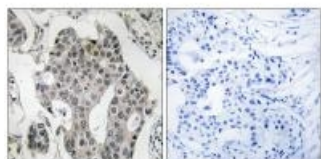
Immunogen	Synthesized peptide derived from internal of human.
Predicted Reactive Species	Chimpanzee, Drosophila, Macaque
Isotype	IgG
Form	Liquid
Concentration	1 mg/ml

Purification	The antibody was affinity-purified from rabbit antiserum by affinity-chromatography using epitope-specific immunogen.
Suggested Dilutions	<p>Dilute the sample so that the expected range of concentrations fall within the detection range of this kit.</p> <p>If the expected range of concentration is unknown, a pilot test should be conducted to decide the optimal dilution ratio for your samples.</p> <p>Some PubMed article(s) citing the expression level of this target are as follows:</p> <p>Boster Bio's internal QC testing used:</p> <p>Western blotting: 1:500~1:3000</p> <p>Immunohistochemistry: 1:50~1:100</p>

## Anti-RAB3GAP2 Antibody (A07244) Images



Western blot analysis of extracts from COS cells, using RAB3GAP2 antibody A07244.



Immunohistochemistry analysis of paraffin-embedded human breast carcinoma tissue using RAB3GAP2 antibody A07244.

## Submit a product review to Biocompare.com

Submit a review of this product to Biocompare.com to receive a \$20 Amazon.com giftcard! Your reviews help your fellow scientists make the right decisions. Thank you for your contribution.



Anti-RAB3GAP2 Antibody