

Anti-RPS23/Ribosomal Protein S23 Antibody

Catalog Number: A07272

About RPS23

Ribosomes, the organelles that catalyze protein synthesis, consist of a small 40S subunit and a large 60S subunit. Together these subunits are composed of 4 RNA species and approximately 80 structurally distinct proteins. This gene encodes a ribosomal protein that is a component of the 40S subunit. The protein belongs to the S12P family of ribosomal proteins. It is located in the cytoplasm. The protein shares significant amino acid similarity with *S. cerevisiae* ribosomal protein S28. As is typical for genes encoding ribosomal proteins, there are multiple processed pseudogenes of this gene dispersed through the genome.

Hori N., Nucleic Acids Res. 21:4394-4394(1993).

Ebert L., Submitted (JUN-2004) to the EMBL/GenBank/DDBJ databases.

Vladimirov S.N., Eur. J. Biochem. 239:144-149(1996).

<

Overview

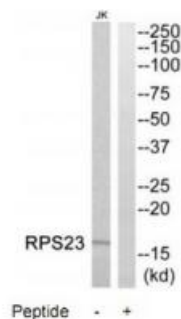
Product Name	Anti-RPS23/Ribosomal Protein S23 Antibody
Reactive Species	Human
Description	Boster Bio Anti-RPS23/Ribosomal Protein S23 Antibody (Catalog # A07272). Tested in WB applications. This antibody reacts with Human.
Application	WB
Clonality	Polyclonal
Formulation	Rabbit IgG in phosphate buffered saline (without Mg ²⁺ and Ca ²⁺), pH 7.4, 150mM NaCl, 0.02% sodium azide and 50% glycerol.
Storage Instructions	Store at -20°C for one year. For short term storage and frequent use, store at 4°C for up to one month. Avoid repeated freeze-thaw cycles.
Host	Rabbit
Uniprot ID	P62266

Technical Details

Immunogen	Synthesized peptide derived from N-terminal of human RPS23.
Predicted Reactive Species	Chimpanzee, Drosophila, Macaque
Isotype	IgG
Form	Liquid

Concentration	1 mg/ml
Purification	The antibody was affinity-purified from rabbit antiserum by affinity-chromatography using epitope-specific immunogen.
Suggested Dilutions	<p>Dilute the sample so that the expected range of concentrations fall within the detection range of this kit.</p> <p>If the expected range of concentration is unknown, a pilot test should be conducted to decide the optimal dilution ratio for your samples.</p> <p>Some PubMed article(s) citing the expression level of this target are as follows:</p> <p>Boster Bio's internal QC testing used:</p> <p>Western blotting: 1:500~1:3000</p>

Anti-RPS23/Ribosomal Protein S23 Antibody (A07272) Images



Western blot analysis of extracts from Jurkat cells, using RPS23 antibody A07272.

Submit a product review to Biocompare.com

Submit a review of this product to Biocompare.com to receive a \$20 Amazon.com giftcard! Your reviews help your fellow scientists make the right decisions. Thank you for your contribution.



Anti-RPS23/Ribosomal Protein S23 Antibody