

## Anti-PBK1 RSL1D1 Antibody

Catalog Number: A07282

### About RSL1D1

PBK1 protein (also known as Ribosomal L1 domain-containing protein 1, cellular senescence-inhibited gene protein, and CATX-11) was isolated from highly invasive first trimester trophoblast cells and has been proposed to regulate their naturally occurring invasive behavior (Huch et al., 1998). PBK1 was also found to be over-expressed in non-small-cell lung cancer (NSCLC) cells (Petroziello et al., 2004). A recent study suggests that PBK1 may up-regulate the urokinase-type plasminogen activator (uPA) gene, which plays an important role in cellular matrix degradation and activation of other protease systems involved in cell invasion (Tong et al., 2005). The cellular localization dynamics of PBK1, as well as the data from its yeast homologue (Cic1p/Nsa3p) suggest that PBK1 is essential for ribosome biogenesis (Fatica et al., 2003). Thus, PBK1 could be controlling cell proliferation by regulating the level of ribosome production. It is hypothesized that PBK1 is involved in regulating both, cell proliferation and invasiveness, therefore playing a dual function in cancer cells transformation.

### Overview

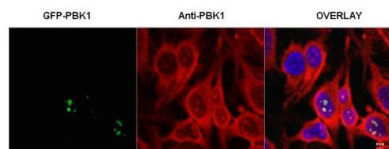
Product Name	Anti-PBK1 RSL1D1 Antibody
Reactive Species	Human
Description	Boster Bio Anti-PBK1 RSL1D1 Antibody (Catalog # A07282). Tested in ELISA, IF, WB applications. This antibody reacts with Human.
Application	ELISA, IF, WB
Clonality	Polyclonal
Formulation	0.02 M Potassium Phosphate, 0.15 M Sodium Chloride, pH 7.2, 0.01% (w/v) Sodium Azide
Storage Instructions	Store vial at -20°C prior to opening. Aliquot contents and freeze at -20°C or below for extended storage. Avoid cycles of freezing and thawing. Centrifuge product if not completely clear after standing at room temperature. This product is stable for several weeks at 4°C as an undiluted liquid. Dilute only prior to immediate use. Expiration date is one (1) year from date of opening. (Ship on dry ice.)
Host	Rabbit
Uniprot ID	O76021

### Technical Details

Immunogen	This affinity purified antibody was prepared from whole rabbit serum produced by repeated immunizations with a synthetic peptide corresponding to an internal sequence of human PBK1.
Predicted Reactive Species	Chicken, Chimpanzee
Cross Reactivity	No cross reactivity with other proteins.
Isotype	IgG

Form	Liquid (sterile filtered)
Concentration	1.1 mg/mL by UV absorbance at 280 nm
Purification	This product was affinity purified from monospecific antiserum by immunoaffinity chromatography. This antibody is specific for human PBK1 protein. A BLAST analysis was used to suggest limited cross-reactivity with PBK1 from mouse based on a 75% homology with the immunizing sequence. Cross-reactivity with PBK1 from other sources has not been determined.
Suggested Dilutions	<p>Dilute the sample so that the expected range of concentrations fall within the detection range of this kit.</p> <p>If the expected range of concentration is unknown, a pilot test should be conducted to decide the optimal dilution ratio for your samples.</p> <p>Some PubMed article(s) citing the expression level of this target are as follows:</p> <p>Boster Bio's internal QC testing used:</p> <p>ELISA: 1:2,500 - 1:10,000</p> <p>IF Microscopy: 1:100</p> <p>IP: 1:100</p> <p>WB: 1:500 - 1:2,000</p>

## Anti-PBK1 RSL1D1 Antibody (A07282) Images



Immunofluorescence microscopy of HeLa cells transfected with GFP-PBK1. In the overlay, specific antibody staining is shown to co-localize with recombinant protein. Cells were fixed with methanol prior to staining. Personal communication, J. McNally and D. Stavreva, NCI, Bethesda, MD.

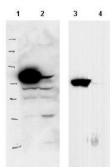


Figure 2. Western blot analysis of RSL1D1 using anti-RSL1D1 antibody (A07282).

Electrophoresis was performed on a 5-20% SDS-PAGE gel at 70V (Stacking gel) / 90V (Resolving gel) for 2-3 hours. The sample well of each lane was loaded with 50ug of sample under reducing conditions.

After Electrophoresis, proteins were transferred to a Nitrocellulose membrane at 150mA for 50-90 minutes. Blocked the membrane with 5% Non-fat Milk/ TBS for 1.5 hour at RT. The membrane was incubated with rabbit anti-RSL1D1 antigen affinity purified polyclonal antibody (Catalog # A07282) at 0.5 ug/mL overnight at 4°C, then washed with TBS-0.1% Tween 3 times with 5 minutes each and probed with a goat anti-Rabbit IgG-HRP secondary antibody at a dilution of 1:10000 for 1.5 hour at RT. The signal is developed using an Enhanced Chemiluminescent detection (ECL) kit (Catalog # SA1022) with Tanon 5200 system. A specific band was detected for RSL1D1.

## Submit a product review to Biocompare.com

Submit a review of this product to Biocompare.com to receive a \$20 Amazon.com giftcard! Your reviews help your fellow scientists make the right decisions. Thank you for your contribution.



Anti-PBK1 RSL1D1 Antibody