

Anti-Grainyhead-like protein 1/GRHL1 Antibody Picoband™

Catalog Number: A07368-1

About GRHL1

This gene encodes a member of the grainyhead family of transcription factors. The encoded protein can exist as a homodimer or can form heterodimers with sister-of-mammalian grainyhead or brother-of-mammalian grainyhead. This protein functions as a transcription factor during development.

Overview

| | |
|----------------------|---|
| Product Name | Anti-Grainyhead-like protein 1/GRHL1 Antibody Picoband™ |
| Reactive Species | Human |
| Description | Boster Bio Anti-Grainyhead-like protein 1/GRHL1 Antibody Picoband™ catalog # A07368-1. Tested in ELISA, Flow Cytometry, IF, ICC, WB applications. This antibody reacts with Human. |
| Application | ELISA, Flow Cytometry, IF, ICC, WB |
| Clonality | Polyclonal |
| Formulation | Each vial contains 4mg Trehalose, 0.9mg NaCl, 0.2mg Na ₂ HPO ₄ , 0.005mg NaN ₃ . |
| Storage Instructions | Store at -20°C for one year from date of receipt. After reconstitution, at 4°C for one month. It can also be aliquotted and stored frozen at -20°C for six months. Avoid repeated freeze-thaw cycles. |
| Host | Rabbit |
| Uniprot ID | Q9NZI5 |

Technical Details

| | |
|-------------------------------|---|
| Immunogen | E.coli-derived human Grainyhead-like protein 1/GRHL1 recombinant protein (Position: M1-I618). |
| Recommended Detection Systems | Boster recommends Enhanced Chemiluminescent Kit with anti-Rabbit IgG (EK1002) for Western blot, and HRP Conjugated anti-Rabbit IgG Super Vision Assay Kit (SV0002-1) for ICC. |
| Cross Reactivity | No cross-reactivity with other proteins. |
| Isotype | Rabbit IgG |
| Form | Lyophilized |
| Concentration | Adding 0.2 ml of distilled water will yield a concentration of 500 ug/ml. |
| Purification | Immunogen affinity purified. |
| Suggested Dilutions | Dilute the sample so that the expected range of concentrations fall within the detection range of this kit. |

If the expected range of concentration is unknown, a pilot test should be conducted to decide the optimal dilution ratio for your samples.

Some PubMed article(s) citing the expression level of this target are as follows:

Boster Bio's internal QC testing used:

Western blot, 0.25-0.5ug/ml, Human

Immunocytochemistry/Immunofluorescence, 5ug/ml, Human

Flow Cytometry, 1-3ug/1x10⁶ cells, Human

Direct ELISA, 0.1-0.5ug/ml, Human

Anti-Grainyhead-like protein 1/GRHL1 Antibody Picoband™ (A07368-1) Images

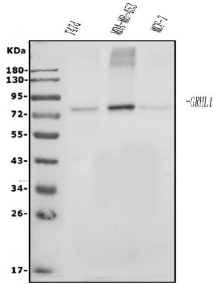


Figure 1. Western blot analysis of Grainyhead-like protein 1/GRHL1 using anti-Grainyhead-like protein 1/GRHL1 antibody (A07368-1).

Electrophoresis was performed on a 5-20% SDS-PAGE gel at 70V (Stacking gel) / 90V (Resolving gel) for 2-3 hours. The sample well of each lane was loaded with 50ug of sample under reducing conditions.

Lane 1: human T-47D whole cell lysates,

Lane 2: human MDA-MB-453 whole cell lysates,

Lane 3: human MCF-7 whole cell lysates.

After Electrophoresis, proteins were transferred to a Nitrocellulose membrane at 150mA for 50-90 minutes.

Blocked the membrane with 5% Non-fat Milk/ TBS for 1.5 hour at RT. The membrane was incubated with rabbit anti-Grainyhead-like protein 1/GRHL1 antigen affinity purified polyclonal antibody (Catalog # A07368-1) at 0.5 ug/mL overnight at 4°C, then washed with TBS-0.1%Tween 3 times with 5 minutes each and probed with a goat anti-rabbit IgG-HRP secondary antibody at a dilution of 1:5000 for 1.5 hour at RT. The signal is developed using an Enhanced Chemiluminescent detection (ECL) kit (Catalog # EK1002) with Tanon 5200 system. A specific band was detected for Grainyhead-like protein 1/GRHL1 at approximately 70KD. The expected band size for Grainyhead-like protein 1/GRHL1 is at 70KD.

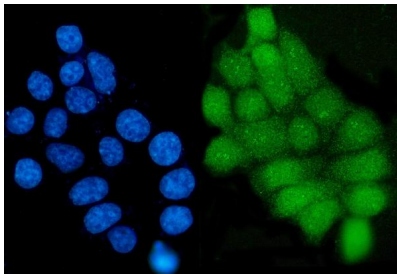


Figure 2. IF analysis of Grainyhead-like protein 1/GRHL1 using anti-Grainyhead-like protein 1/GRHL1 antibody (A07368-1).

Grainyhead-like protein 1/GRHL1 was detected in immunocytochemical section of MCF-7 cells. Enzyme antigen retrieval was performed using IHC enzyme antigen retrieval reagent (AR0022) for 15 mins. The cells were blocked with 10% goat serum. And then incubated with 5ug/mL rabbit anti-Grainyhead-like protein 1/GRHL1 Antibody (A07368-1) overnight at 4°C. DyLight®488 Conjugated Goat Anti-Rabbit IgG (BA1127) was used as secondary antibody at 1:100 dilution and incubated for 30 minutes at 37°C. The section was counterstained with DAPI. Visualize using a fluorescence microscope and filter sets appropriate for the label used.

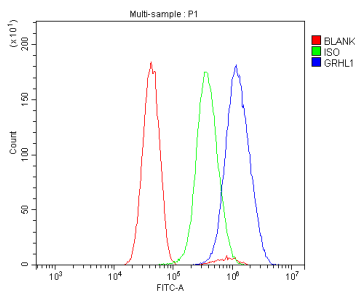


Figure 3. Flow Cytometry analysis of U251 cells using anti-Grainyhead-like protein 1/GRHL1 antibody (A07368-1).

Overlay histogram showing U251 cells stained with A07368-1 (Blue line). The cells were blocked with 10% normal goat serum. And then incubated with rabbit anti-Grainyhead-like protein 1/GRHL1 Antibody (A07368-1, 1ug/1x10⁶ cells) for 30 min at 20°C. DyLight®488 conjugated goat anti-rabbit IgG (BA1127, 5-10ug/1x10⁶ cells) was used as secondary antibody for 30 minutes at 20°C. Isotype control antibody (Green line) was rabbit IgG (1ug/1x10⁶) used under the same conditions. Unlabelled sample (Red line) was also used as a control.

Submit a product review to Biocompare.com

Submit a review of this product to Biocompare.com to receive a \$20 Amazon.com giftcard! Your reviews help your fellow scientists make the right decisions. Thank you for your contribution.



Anti-Grainyhead-like protein 1/GRHL1 Antibody