

## Anti-PACRG Antibody

Catalog Number: A07487

### About PACRG

PACRG (also known as Parkin coregulated gene protein and PARK2 coregulated) is a gene located very close to parkin, in reverse orientation on the chromosome. It is thought to be co-transcribed with parkin by a bi-directional promoter between the two genes. PACRG is expressed in all immune tissues, spleen, lymph nodes, thymus, tonsils, leukocyte and bone marrow and is also expressed in heart, brain, skeletal muscle, kidney, lung and pancreas. PACRG is expressed in primary Schwann cells and very weakly by monocyte-derived macrophages, which are the primary host cells of Mycobacterium leprae, the causative agent of leprosy. Splice variants have been described for this protein.

### Overview

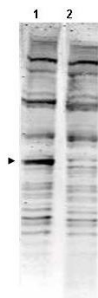
Product Name	Anti-PACRG Antibody
Reactive Species	Mouse
Description	Boster Bio Anti-PACRG Antibody (Catalog # A07487). Tested in ELISA, WB applications. This antibody reacts with Mouse.
Application	ELISA, WB
Clonality	Polyclonal
Formulation	0.02 M Potassium Phosphate, 0.15 M Sodium Chloride, pH 7.2, 0.01% (w/v) Sodium Azide
Storage Instructions	Store vial at -20°C prior to opening. Aliquot contents and freeze at -20°C or below for extended storage. Avoid cycles of freezing and thawing. Centrifuge product if not completely clear after standing at room temperature. This product is stable for several weeks at 4°C as an undiluted liquid. Dilute only prior to immediate use. Expiration date is one (1) year from date of opening. (Ship on dry ice.)
Host	Rabbit
Uniprot ID	Q96M98

### Technical Details

Immunogen	This affinity purified antibody was prepared from whole rabbit serum produced by repeated immunizations with a synthetic peptide corresponding to an internal region of Human PACRG protein.
Predicted Reactive Species	Chicken
Cross Reactivity	No cross reactivity with other proteins.
Isotype	IgG
Form	Liquid (sterile filtered)

Concentration	1.6 mg/mL by UV absorbance at 280 nm
Purification	This affinity purified antibody is directed against human PACRG protein. The product was affinity purified from monospecific antiserum by immunoaffinity purification. A BLAST analysis was used to suggest reactivity with this protein from human, mouse and chicken based on 100% homology for the immunogen sequence. Cross-reactivity with PACRG protein from zebrafish and rat may occur as this sequence only varies by one amino acid residue (94% homology). Expect reactivity with both splice variants of this protein. Cross-reactivity with PACRG homologues from other sources has not been determined.
Suggested Dilutions	<p>Dilute the sample so that the expected range of concentrations fall within the detection range of this kit.</p> <p>If the expected range of concentration is unknown, a pilot test should be conducted to decide the optimal dilution ratio for your samples.</p> <p>Some PubMed article(s) citing the expression level of this target are as follows:</p> <p>Boster Bio's internal QC testing used:</p> <p>ELISA: 1:2,000 - 1:10,000</p> <p>WB: 1:500 - 1:3,000</p>

## Anti-PACRG Antibody (A07487) Images



Western blot analysis of PACRG expression in human PACRG (arrowhead lane 1). Specific reactivity with this band is blocked when the antibody is pre-incubated with the immunizing peptide (lane 2). PACRG at 40KD was detected using rabbit anti-PACRG Antigen Affinity purified polyclonal antibody (Catalog # A07487) at 1:1500. The blot was developed using chemiluminescence (ECL) method (Catalog # EK1002).

## Submit a product review to Biocompare.com

Submit a review of this product to Biocompare.com to receive a \$20 Amazon.com giftcard! Your reviews help your fellow scientists make the right decisions. Thank you for your contribution.



Anti-PACRG Antibody