

Anti-CREBZF/Zhangfei Antibody

Catalog Number: A07952

About CREBZF

Strongly activates transcription when bound to HCFC1. Suppresses the expression of HSV proteins in cells infected with the virus in a HCFC1-dependent manner. Also suppresses the HCFC1-dependent transcriptional activation by CREB3 and reduces the amount of CREB3 in the cell. Able to down-regulate expression of some cellular genes in CREBZF-expressing cells.

Lu R., Nucleic Acids Res. 28:2446-2454(2000).

The MGC Project Team, Genome Res. 14:2121-2127(2004).

Misra V., J. Biol. Chem. 280:15257-15266(2005).<

Overview

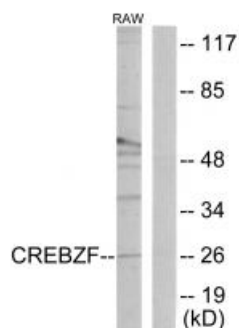
Product Name	Anti-CREBZF/Zhangfei Antibody
Reactive Species	Human, Mouse
Description	Boster Bio Anti-CREBZF/Zhangfei Antibody (Catalog # A07952). Tested in WB, IF applications. This antibody reacts with Human, Mouse.
Application	IF, WB
Clonality	Polyclonal
Formulation	Rabbit IgG in phosphate buffered saline (without Mg ²⁺ and Ca ²⁺), pH 7.4, 150mM NaCl, 0.02% sodium azide and 50% glycerol.
Storage Instructions	Store at -20°C for one year. For short term storage and frequent use, store at 4°C for up to one month. Avoid repeated freeze-thaw cycles.
Host	Rabbit
Uniprot ID	Q9NS37

Technical Details

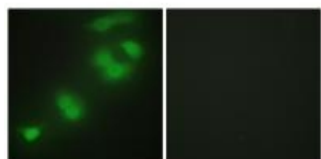
Immunogen	Synthesized peptide derived from internal of human CREBZF.
Predicted Reactive Species	Chimpanzee, Drosophila, Macaque
Isotype	IgG
Form	Liquid
Concentration	1 mg/ml
Purification	The antibody was affinity-purified from rabbit antiserum by affinity-chromatography using epitope-

	specific immunogen.
Suggested Dilutions	<p>Dilute the sample so that the expected range of concentrations fall within the detection range of this kit.</p> <p>If the expected range of concentration is unknown, a pilot test should be conducted to decide the optimal dilution ratio for your samples.</p> <p>Some PubMed article(s) citing the expression level of this target are as follows:</p> <p>Boster Bio's internal QC testing used:</p> <p>Western blotting: 1:500~1:3000</p> <p>Immunofluorescence: 1:100~1:500</p>

Anti-CREBZF/Zhangfei Antibody (A07952) Images



Western blot analysis of extracts from RAW264.7 cells, using CREBZF antibody A07952.



Immunofluorescence analysis of HepG2 cells, using CREBZF antibody A07952.

Submit a product review to Biocompare.com

Submit a review of this product to Biocompare.com to receive a \$20 Amazon.com giftcard! Your reviews help your fellow scientists make the right decisions. Thank you for your contribution.



Anti-CREBZF/Zhangfei Antibody