

## Anti-Protein S100-A16 S100A16 Antibody

Catalog Number: A08032

### About S100A16

Calcium-binding protein. Binds one calcium ion per monomer.

Marenholz I., Submitted (OCT-2003) to the EMBL/GenBank/DDBJ databases.

Morita K.; Submitted (JAN-2003) to the EMBL/GenBank/DDBJ databases.

Gregory S.G., Nature 441:315-321(2006).

### Overview

|                      |  |
|----------------------|--|
| Product Name         | Anti-Protein S100-A16 S100A16 Antibody   |
| Reactive Species     | Human, Mouse, Rat  |
| Description          | Boster Bio Anti-Protein S100-A16 S100A16 Antibody (Catalog # A08032). Tested in WB applications. This antibody reacts with Human, Mouse, Rat.      |
| Application          | WB   |
| Clonality            | Polyclonal   |
| Formulation          | Rabbit IgG in phosphate buffered saline (without Mg <sup>2+</sup> and Ca <sup>2+</sup> ), pH 7.4, 150mM NaCl, 0.02% sodium azide and 50% glycerol. |
| Storage Instructions | Store at -20°C for one year. For short term storage and frequent use, store at 4°C for up to one month. Avoid repeated freeze-thaw cycles.         |
| Host                 | Rabbit   |
| Uniprot ID           | Q96FQ6   |

### Technical Details

|                            |   |
|----------------------------|---|
| Immunogen                  | Synthesized peptide derived from internal of human S100A16.   |
| Predicted Reactive Species | Chimpanzee, Drosophila, Macaque   |
| Isotype                    | IgG   |
| Form                       | Liquid  |
| Concentration              | 1 mg/ml   |
| Purification               | The antibody was affinity-purified from rabbit antiserum by affinity-chromatography using epitope-specific immunogen. |
| Suggested Dilutions        | Dilute the sample so that the expected range of concentrations fall within the detection range of this                |

kit.

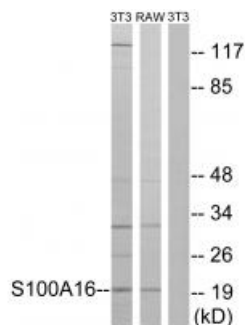
If the expected range of concentration is unknown, a pilot test should be conducted to decide the optimal dilution ratio for your samples.

Some PubMed article(s) citing the expression level of this target are as follows:

Boster Bio's internal QC testing used:

Western blotting: 1:500~1:3000

## Anti-Protein S100-A16 S100A16 Antibody (A08032) Images



Western blot analysis of extracts from 3T3 cells and RAW264.7 cells, using S100A16 antibody A08032.

### Submit a product review to Biocompare.com

Submit a review of this product to Biocompare.com to receive a \$20 Amazon.com giftcard! Your reviews help your fellow scientists make the right decisions. Thank you for your contribution.



Anti-Protein S100-A16 S100A16 Antibody