

## Anti-alpha-Tubulin Tuba1b Antibody

Catalog Number: A08382

### About TUBA1B

Tubulin Loading Control Antibody recognizes microtubules which are involved in a wide variety of cellular activities ranging from mitosis and transport events to cell movement and the maintenance of cell shape. Tubulin itself is a globular protein consisting of two polypeptides (alpha and beta tubulin). Alpha and beta tubulin dimers are assembled to 13 protofilaments that form a microtubule of 22-nm diameter. Tyrosine ligase adds a C-terminal tyrosine to monomeric alpha tubulin. Assembled microtubules can again be detyrosinated by a cytoskeleton-associated carboxypeptidase. Detyrosinated alpha tubulin is referred to as Glu-tubulin. Another post-translational modification of detyrosinated alpha tubulin is C-terminal polyglutamylation, which is characteristic of microtubules in neuronal cells and the mitotic spindle. This antibody makes an excellent loading control. Anti-Alpha-tubulin antibody is ideal for investigators involved in cell cycle protein research.

### Overview

Product Name	Anti-alpha-Tubulin Tuba1b Antibody
Reactive Species	Human, Mouse, Rat
Description	Boster Bio Anti-alpha-Tubulin Tuba1b Antibody (Catalog # A08382). Tested in ELISA, IF, WB applications. This antibody reacts with Human, Mouse, Rat.
Application	ELISA, IF, WB
Clonality	Polyclonal
Formulation	0.02 M Potassium Phosphate, 0.15 M Sodium Chloride, pH 7.2, 0.01% (w/v) Sodium Azide
Storage Instructions	Store Anti-Tubulin Loading Control Antibody at -20°C prior to opening. Aliquot Loading Control Antibody contents and freeze at -20°C or below for extended storage. Avoid cycles of freezing and thawing. Centrifuge Tubulin Loading Control Antibody if not completely clear after standing at room temperature. This Control Antibody is stable for several weeks at 4°C as an undiluted liquid. Dilute only prior to immediate use. Expiration date is one (1) year from date of opening. (Ship on dry ice.)
Host	Rabbit
Uniprot ID	P68363

### Technical Details

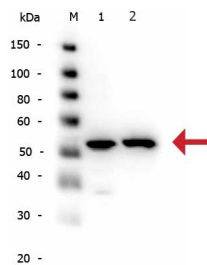
Immunogen	Anti-Tubulin Loading Control Antibody was prepared from whole rabbit serum produced by repeated immunizations with a synthetic peptide corresponding to the C-Terminal region near amino acids 425-451 of Human alpha Tubulin.
Predicted Reactive Species	Bovine, Chicken
Cross Reactivity	No cross reactivity with other proteins.
Isotype	IgG

Form	Liquid (sterile filtered)
Concentration	1.1mg/ml by UV absorbance at 280 nm
Purification	Anti-Tubulin Loading Control Antibody is directed against human alpha Tubulin protein. The Loading Control Antibody was affinity purified from monospecific antiserum by immunoaffinity purification. A BLAST analysis was used to suggest that this antibody would react with alpha Tubulin from a wide range of organisms, including avian, mammalian aquatic, parasitic and alga sources based on 100% homology for the immunogen sequence. Cross-reactivity will occur with all isoforms of alpha tubulin. Such broad reactivity makes this antibody useful as an excellent loading control.
Suggested Dilutions	<p>Dilute the sample so that the expected range of concentrations fall within the detection range of this kit.</p> <p>If the expected range of concentration is unknown, a pilot test should be conducted to decide the optimal dilution ratio for your samples.</p> <p>Some PubMed article(s) citing the expression level of this target are as follows:</p> <p>Boster Bio's internal QC testing used:</p> <p>ELISA: 1:90,000</p> <p>IHC: 1:500 - 1:2,000</p> <p>IF Microscopy: 1:500 - 1:2,000</p> <p>WB: 1:1,000 - 1:5,000</p>

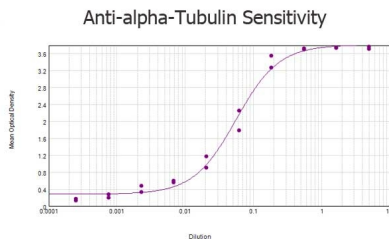
## Anti-alpha-Tubulin Tuba1b Antibody (A08382) Images



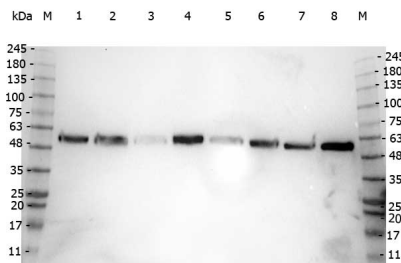
Western blot analysis of alpha Tubulin expression in whole cell lysates from mouse brain (lane 1), rat brain extract (lane 2), A431 cell lysates (lane 3), Jurkat cell lysates (lane 4) and HeLa whole cell lysates (lane 5) using rabbit anti-alpha-Tubulin Antigen Affinity purified polyclonal antibody (Catalog # A08382) at 1:1,200. Predicted/Observed size: 50 kDa corresponding to alpha tubulin (arrowhead). Other band(s): none.



Western blot analysis of alpha Tubulin expression in HeLa whole cell lysates (lane 1), NIH/3T3 whole cell lysates (lane 2) using rabbit anti-alpha-Tubulin Antigen Affinity purified polyclonal antibody (Catalog # A08382) at 1:1,000. Predicted/Observed size: 50 kDa, 50 kDa for alpha-Tubulin. Other band(s): N/A.



ELISA results of rabbit anti-alpha-Tubulin Antigen Affinity purified polyclonal antibody (Catalog # A08382) tested against BSA-conjugated peptide of immunizing peptide. Each well was coated in duplicate with 0.1



Western blot analysis of alpha Tubulin expression in HEK293 cell lysates (lane 1), HeLa whole cell lysates (lane 2), MCF-7 cell lysates (lane 3), Jurkat cell lysates (lane 4), A431 cell lysates (lane 5), LNCaP cell lysates (lane 6), A-172 cell lysates (lane 7) and NIH/3T3 cell lysates (lane 8) using rabbit anti-alpha-Tubulin Antigen Affinity purified polyclonal antibody (Catalog # A08382) at 1:1,200. Predicted/Observed size: 50 kDa for Alpha-tubulin.

## 14 Publications Citing This Product

1. PubMed ID: 26269769, Endogenous Nodal promotes melanoma undergoing epithelial-mesenchymal transition via Snail and Slug in vitro and in vivo.
2. PubMed ID: 18958584, Prohibitin protects against oxidative stress-induced cell injury in cultured neonatal cardiomyocyte
3. PubMed ID: 19412742, NGFI-B targets mitochondria and induces cardiomyocyte apoptosis in restraint-stressed rats by mediating energy metabolism disorder

Visit [bosterbio.com/anti-alpha-tubulin-antibody-a08382-boster.html](https://bosterbio.com/anti-alpha-tubulin-antibody-a08382-boster.html) to see all 14 publications.

## Submit a product review to Biocompare.com

Submit a review of this product to Biocompare.com to receive a \$20 Amazon.com giftcard! Your reviews help your fellow scientists make the right decisions. Thank you for your contribution.



Anti-alpha-Tubulin Tuba1b Antibody