

Anti-LMTK3 Antibody Picoband™

Catalog Number: A08432-2

About LMTK3

Lemur tyrosine kinase 3 is a protein that in humans is encoded by the LMTK3 gene. It is mapped to 19q13.33. LMTK3 (lemur tyrosine kinase 3), also known as LMR3 or TYKLM3, is a 1,460 amino acid protein that contains one protein kinase domain. One of several members of the protein kinase superfamily, LMTK3 is expressed at low levels in brain and testis where it catalyzes the ATP-dependent phosphorylation of target proteins, thereby modifying their function.

Overview

Product Name	Anti-LMTK3 Antibody Picoband™
Reactive Species	Human, Mouse, Rat
Description	Boster Bio Anti-LMTK3 Antibody Picoband™ catalog # A08432-2. Tested in ELISA, IHC, WB applications. This antibody reacts with Human, Mouse, Rat.
Application	ELISA, IHC, WB
Clonality	Polyclonal
Formulation	Each vial contains 4mg Trehalose, 0.9mg NaCl, 0.2mg Na2HPO4, 0.05mg NaN3.
Storage Instructions	Store at -20°C for one year from date of receipt. After reconstitution, at 4°C for one month. It can also be aliquotted and stored frozen at -20°C for six months. Avoid repeated freeze-thaw cycles.
Host	Rabbit
Uniprot ID	Q96Q04

Technical Details

Immunogen	E.coli-derived human LMTK3 recombinant protein (Position: S1317-D1382).
Recommended Detection Systems	Boster recommends Enhanced Chemiluminescent Kit with anti-Rabbit IgG (EK1002) for Western blot, and HRP Conjugated anti-Rabbit IgG Super Vision Assay Kit (SV0002-1) for IHC(P).
Cross Reactivity	No cross-reactivity with other proteins.
Isotype	Rabbit IgG
Form	Lyophilized
Concentration	Adding 0.2 ml of distilled water will yield a concentration of 500 ug/ml.
Purification	Immunogen affinity purified.
Suggested Dilutions	Dilute the sample so that the expected range of concentrations fall within the detection range of this

kit.

If the expected range of concentration is unknown, a pilot test should be conducted to decide the optimal dilution ratio for your samples.

Some PubMed article(s) citing the expression level of this target are as follows:

Boster Bio's internal QC testing used:

Western blot, 0.1-0.5ug/ml

Immunohistochemistry (Paraffin-embedded Section), 0.5-1ug/ml

Direct ELISA, 0.1-0.5ug/ml

Anti-LMTK3 Antibody Picoband™ (A08432-2) Images

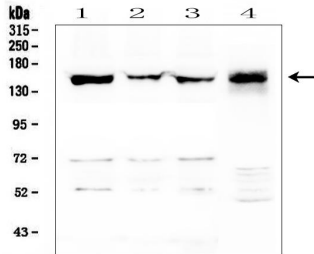


Figure 1. Western blot analysis of LMTK3 using anti-LMTK3 antibody (A08432-2).

Electrophoresis was performed on a 5-20% SDS-PAGE gel at 70V (Stacking gel) / 90V (Resolving gel) for 2-3 hours. The sample well of each lane was loaded with 50ug of sample under reducing conditions.

Lane 1: human HEK293 whole cell lysates

Lane 2: human PC-3 whole cell lysates

Lane 3: human U2OS whole cell lysates

Lane 4: mouse thymus tissue lysates

After Electrophoresis, proteins were transferred to a Nitrocellulose membrane at 150mA for 50-90 minutes.

Blocked the membrane with 5% Non-fat Milk/ TBS for 1.5 hour at RT. The membrane was incubated with rabbit anti-LMTK3 antigen affinity purified polyclonal antibody (Catalog # A08432-2) at 0.5 ug/mL overnight at 4°C, then washed with TBS-0.1%Tween 3 times with 5 minutes each and probed with a goat anti-rabbit IgG-HRP secondary antibody at a dilution of 1:10000 for 1.5 hour at RT. The signal is developed using an Enhanced Chemiluminescent detection (ECL) kit (Catalog # EK1002) with Tanon 5200 system. A specific band was detected for LMTK3 at approximately 153KD. The expected band size for LMTK3 is at 153KD.

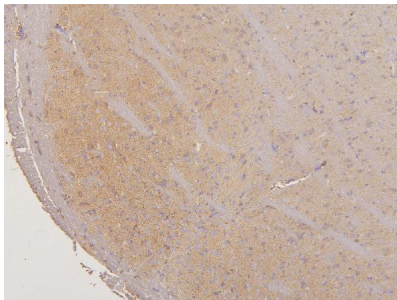


Figure 2. IHC analysis of LMTK3 using anti-LMTK3 antibody (A08432-2).

LMTK3 was detected in paraffin-embedded section of mouse brain tissues. Heat mediated antigen retrieval was performed in citrate buffer (pH6, epitope retrieval solution) for 20 mins. The tissue section was blocked with 10% goat serum. The tissue section was then incubated with 1ug/ml rabbit anti-LMTK3 Antibody (A08432-2) overnight at 4°C. Biotinylated goat anti-rabbit IgG was used as secondary antibody and incubated for 30 minutes at 37°C. The tissue section was developed using Streptavidin-Biotin-Complex (SABC)(Catalog # SA1022) with DAB as the chromogen.

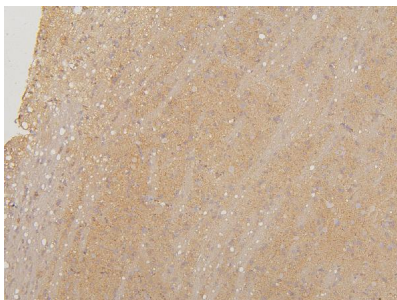


Figure 3. IHC analysis of LMTK3 using anti-LMTK3 antibody (A08432-2).

LMTK3 was detected in paraffin-embedded section of rat brain tissues. Heat mediated antigen retrieval was performed in citrate buffer (pH6, epitope retrieval solution) for 20 mins. The tissue section was blocked with 10% goat serum. The tissue section was then incubated with 1ug/ml rabbit anti-LMTK3 Antibody (A08432-2) overnight at 4°C. Biotinylated goat anti-rabbit IgG was used as secondary antibody and incubated for 30 minutes at 37°C. The tissue section was developed using Streptavidin-Biotin-Complex (SABC)(Catalog # SA1022) with DAB as the chromogen.

Submit a review of this product to Biocompare.com to receive a \$20 Amazon.com giftcard! Your reviews help your fellow scientists make the right decisions. Thank you for your contribution.



Anti-LMTK3 Antibody [™]