

## Anti-CHP2 Antibody

Catalog Number: A08478-1

### About CHP2

Functions as an integral cofactor in cell pH regulation by controlling plasma membrane-type Na<sup>+</sup>/H<sup>+</sup> exchange activity. Binds to and activates SLC9A1/NHE1 in a serum-independent manner, thus increasing pH and protecting cells from serum deprivation-induced death. Also plays a role in the regulation of cell proliferation and tumor growth by increasing the phosphatase activity of PPP3CA in a calcium-dependent manner. Activator of the calcineurin/NFAT signaling pathway. Involved in the cytoplasmic translocation of the transcription factor NFATC3 to the nucleus.

Loftus B.J., Genomics 60:295-308(1999).

Wang Y., J. Immunol. 169:1102-1109(2002).

Pang T., J. Biol. Chem. 277:43771-43777(2002).

### Overview

Product Name	Anti-CHP2 Antibody
Reactive Species	Human, Mouse, Rat
Description	Boster Bio Anti-CHP2 Antibody catalog # A08478-1. Tested in WB,ICC applications. This antibody reacts with Human,Mouse,Rat.
Application	ICC, WB
Clonality	Polyclonal
Formulation	Rabbit IgG, 1mg/ml in PBS with 0.02% sodium azide, 50% glycerol, pH7.2
Storage Instructions	Store at -20°C for one year. For short term storage and frequent use, store at 4°C for up to one month. Avoid repeated freeze-thaw cycles.
Host	Rabbit
Uniprot ID	O43745

### Technical Details

Immunogen	Synthesized peptide derived from internal of humanCHP2.
Predicted Reactive Species	Chimpanzee, Drosophila, Macaque
Isotype	IgG
Form	Liquid
Concentration	1 mg/ml
Purification	The antibody was affinity-purified from rabbit antiserum by affinity-chromatography using epitope-

specific immunogen and the purity is > 95% (by SDS-PAGE).

**Suggested Dilutions**

Dilute the sample so that the expected range of concentrations fall within the detection range of this kit.

If the expected range of concentration is unknown, a pilot test should be conducted to decide the optimal dilution ratio for your samples.

Some PubMed article(s) citing the expression level of this target are as follows:

Boster Bio's internal QC testing used:

WB: 1:500-1:1000

ICC: 1:50-1:200

## Anti-CHP2 Antibody (A08478-1) Images

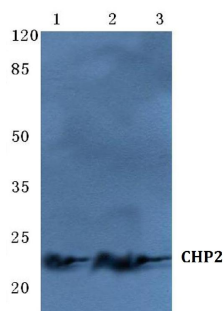


Figure 1. Western blotting validation for Anti-CHP2 Antibody A08478-1

Western blot (WB) analysis of CHP2 polyclonal antibody at 1:500 dilution

Lane1:HepG2 cell lysate

Lane2:Mouse liver tissue lysate

Lane3:H9C2 cell lysate

Electrophoresis was performed on a SDS-PAGE gel. To determine SDS-PAGE gel concentration

## Submit a product review to Biocompare.com

Submit a review of this product to Biocompare.com to receive a \$20 Amazon.com giftcard! Your reviews help your fellow scientists make the right decisions. Thank you for your contribution.



Anti-CHP2 Antibody