

Anti-CHP2 Antibody

Catalog Number: A08478

About CHP2

Functions as an integral cofactor in cell pH regulation by controlling plasma membrane-type Na⁺/H⁺ exchange activity. Binds to and activates SLC9A1/NHE1 in a serum-independent manner, thus increasing pH and protecting cells from serum deprivation-induced death. Also plays a role in the regulation of cell proliferation and tumor growth by increasing the phosphatase activity of PPP3CA in a calcium-dependent manner. Activator of the calcineurin/NFAT signaling pathway. Involved in the cytoplasmic translocation of the transcription factor NFATC3 to the nucleus.

Loftus B.J., Genomics 60:295-308(1999).

Wang Y., J. Immunol. 169:1102-1109(2002).

Pang T., J. Biol. Chem. 277:43771-43777(2002).

Overview

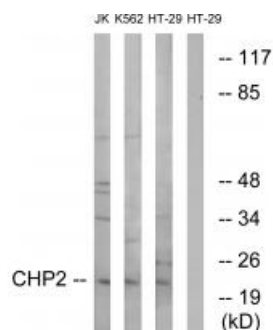
Product Name	Anti-CHP2 Antibody
Reactive Species	Human, Mouse, Rat
Description	Boster Bio Anti-CHP2 Antibody (Catalog # A08478). Tested in WB applications. This antibody reacts with Human, Mouse, Rat.
Application	WB
Clonality	Polyclonal
Formulation	Rabbit IgG in phosphate buffered saline (without Mg ²⁺ and Ca ²⁺), pH 7.4, 150mM NaCl, 0.02% sodium azide and 50% glycerol.
Storage Instructions	Store at -20°C for one year. For short term storage and frequent use, store at 4°C for up to one month. Avoid repeated freeze-thaw cycles.
Host	Rabbit
Uniprot ID	O43745

Technical Details

Immunogen	Synthesized peptide derived from internal of humanCHP2.
Predicted Reactive Species	Chimpanzee, Drosophila, Macaque
Isotype	IgG
Form	Liquid
Concentration	1 mg/ml

Purification	The antibody was affinity-purified from rabbit antiserum by affinity-chromatography using epitope-specific immunogen.
Suggested Dilutions	<p>Dilute the sample so that the expected range of concentrations fall within the detection range of this kit.</p> <p>If the expected range of concentration is unknown, a pilot test should be conducted to decide the optimal dilution ratio for your samples.</p> <p>Some PubMed article(s) citing the expression level of this target are as follows:</p> <p>Boster Bio's internal QC testing used:</p> <p>Western blotting: 1:500~1:3000</p>

Anti-CHP2 Antibody (A08478) Images



Western blot analysis of extracts from Jurkat cells, K562 cells and HT-29 cells, using CHP2 antibody A08478.

Submit a product review to Biocompare.com

Submit a review of this product to Biocompare.com to receive a \$20 Amazon.com giftcard! Your reviews help your fellow scientists make the right decisions. Thank you for your contribution.



Anti-CHP2 Antibody