

Anti-COP9 Signalosome Csn6 Subunit COPS6 Antibody

Catalog Number: A08543

About COPS6

Cullins assemble a potentially large number of ubiquitin ligases by binding to the RING protein ROC1 to catalyse polyubiquitination, as well as binding to various specificity factors to recruit substrates. PARC is a cullin family member that functions as a cytoplasmic anchor protein in p53-associated protein complexes. PARC regulates the subcellular localization of p53 and subsequent function. PARC forms a complex with p53 in the cytoplasm of unstressed cells and interacts with UBCH7 and UBCH8. PARC shows a cytoplasmic localization and is ubiquitously expressed in all tissues with highest expression in testis brain and kidney.

Overview

Product Name	Anti-COP9 Signalosome Csn6 Subunit COPS6 Antibody
Reactive Species	Human
Description	Boster Bio Anti-COP9 Signalosome Csn6 Subunit COPS6 Antibody catalog # A08543. Tested in WB applications. This antibody reacts with Human.
Application	WB
Clonality	Polyclonal
Formulation	Each vial contains 10mM sodium azide.
Storage Instructions	Store at -20°C for one year. For short term storage and frequent use, store at 4°C for up to one month. Avoid repeated freeze-thaw cycles.
Host	Rabbit
Uniprot ID	Q7L5N1

Technical Details

Immunogen	Synthetic peptide corresponding to aa 283-297 of human COP9 signalosome (Csn6 subunit).
Predicted Reactive Species	Bovine, Canine, Equine, Guinea Pig, Rabbit
Cross Reactivity	No cross reactivity with other proteins.
Isotype	IgG
Form	Liquid
Concentration	0.5-1mg/ml, actual concentration vary by lot. Use suggested dilution ratio to decide dilution procedure.
Purification	Partially purified immunoglobulin.

Suggested Dilutions

Dilute the sample so that the expected range of concentrations fall within the detection range of this kit.

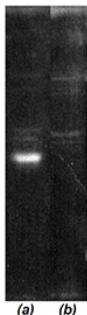
If the expected range of concentration is unknown, a pilot test should be conducted to decide the optimal dilution ratio for your samples.

Some PubMed article(s) citing the expression level of this target are as follows:

Boster Bio's internal QC testing used:

WB, 1:1000, Human

Anti-COP9 Signalosome Csn6 Subunit COPS6 Antibody (A08543) Images



Western blot analysis of COP9 Signalosome Csn6 Subunit expression in Luminograph of a HELA S3 cytosol preparation after SDS PAGE followed by blotting onto PVDF membrane and probing with (a) antibody and (b) antibody pre-absorbed with cognate peptide. COP9 Signalosome Csn6 Subunit at 33.5KD was detected using rabbit anti-COP9 Signalosome Csn6 Subunit partially purified immunoglobulin polyclonal antibody (Catalog # A08543) at 1: 1000. The blot was developed using chemiluminescence (ECL) method (Catalog # EK1002).

Submit a product review to Biocompare.com

Submit a review of this product to Biocompare.com to receive a \$20 Amazon.com giftcard! Your reviews help your fellow scientists make the right decisions. Thank you for your contribution.



Anti-COP9 Signalosome Csn6 Subunit COPS6 Antibody