

## Anti-Ik3-1 CABLES1 Antibody

Catalog Number: A08581

### About CABLES1

Cyclin-dependent kinase binding protein. Enhances cyclin-dependent kinase tyrosine phosphorylation by nonreceptor tyrosine kinases, such as that of CDK5 by activated ABL1, which leads to increased CDK5 activity and is critical for neuronal development, and that of CDK2 by WEE1, which leads to decreased CDK2 activity and growth inhibition. Positively affects neuronal outgrowth. Plays a role as a regulator for p53/p73-induced cell death By similarity.

Ota T., Nat. Genet. 36:40-45(2004).

Nusbaum C., Nature 437:551-555(2005).

Wu C.-L., Cancer Res. 61:7325-7332(2001).

### Overview

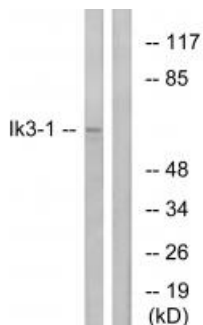
Product Name	Anti-Ik3-1 CABLES1 Antibody
Reactive Species	Human, Mouse
Description	Boster Bio Anti-Ik3-1 CABLES1 Antibody (Catalog # A08581). Tested in WB applications. This antibody reacts with Human, Mouse.
Application	WB
Clonality	Polyclonal
Formulation	Rabbit IgG in phosphate buffered saline (without Mg <sup>2+</sup> and Ca <sup>2+</sup> ), pH 7.4, 150mM NaCl, 0.02% sodium azide and 50% glycerol.
Storage Instructions	Store at -20°C for one year. For short term storage and frequent use, store at 4°C for up to one month. Avoid repeated freeze-thaw cycles.
Host	Rabbit
Uniprot ID	Q8TDN4

### Technical Details

Immunogen	Synthesized peptide derived from internal of human Ik3-1.
Predicted Reactive Species	Chimpanzee, Drosophila, Macaque
Isotype	IgG
Form	Liquid
Concentration	1 mg/ml

Purification	The antibody was affinity-purified from rabbit antiserum by affinity-chromatography using epitope-specific immunogen.
Suggested Dilutions	<p>Dilute the sample so that the expected range of concentrations fall within the detection range of this kit.</p> <p>If the expected range of concentration is unknown, a pilot test should be conducted to decide the optimal dilution ratio for your samples.</p> <p>Some PubMed article(s) citing the expression level of this target are as follows:</p> <p>Boster Bio's internal QC testing used:</p> <p>Western blotting: 1:500~1:3000</p>

## Anti-Ik3-1 CABLES1 Antibody (A08581) Images



Western blot analysis of extracts from LOVO cells, using Ik3-1 antibody A08581.

## Submit a product review to Biocompare.com

Submit a review of this product to Biocompare.com to receive a \$20 Amazon.com giftcard! Your reviews help your fellow scientists make the right decisions. Thank you for your contribution.



Anti-Ik3-1 CABLES1 Antibody