

Anti-TUT1/Tutase Antibody

Catalog Number: A09330

About TUT1

Poly(A) polymerase that creates the 3'-poly(A) tail of specific pre-mRNAs. Localizes to nuclear speckles together with PIP5K1A and mediates polyadenylation of a select set of mRNAs, such as HMOX1. In addition to polyadenylation, it is also required for the 3'-end cleavage of pre-mRNAs: binds to the 3'UTR of targeted pre-mRNAs and promotes the recruitment and assembly of the CPSF complex on the 3'UTR of pre-mRNAs. In addition to adenylyltransferase activity, also has uridylyltransferase activity. However, the ATP ratio is higher than UTP in cells, suggesting that it functions primarily as a poly(A) polymerase. Acts as a specific terminal uridylyltransferase for U6 snRNA in vitro: responsible for a controlled elongation reaction that results in the restoration of the four 3'-terminal UMP-residues found in newly transcribed U6 snRNA. Not involved in replication-dependent histone mRNA degradation.

Ota T., Nat. Genet. 36:40-45(2004).

The MGC Project Team, Genome Res. 14:2121-2127(2004).

Trippe R., RNA 12:1494-1504(2006).

Overview

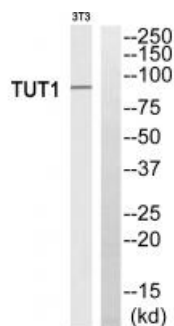
Product Name	Anti-TUT1/Tutase Antibody
Reactive Species	Human, Mouse
Description	Boster Bio Anti-TUT1/Tutase Antibody (Catalog # A09330). Tested in WB, IHC applications. This antibody reacts with Human, Mouse.
Application	IHC, WB
Clonality	Polyclonal
Formulation	Rabbit IgG in phosphate buffered saline (without Mg ²⁺ and Ca ²⁺), pH 7.4, 150mM NaCl, 0.02% sodium azide and 50% glycerol.
Storage Instructions	Store at -20°C for one year. For short term storage and frequent use, store at 4°C for up to one month. Avoid repeated freeze-thaw cycles.
Host	Rabbit
Uniprot ID	Q9H6E5

Technical Details

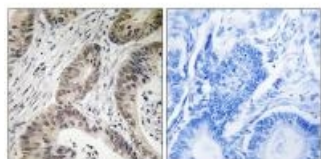
Immunogen	Synthesized peptide derived from internal of human TUT1.
Predicted Reactive Species	Chimpanzee, Drosophila, Macaque
Form	Liquid

Concentration	1 mg/ml
Purification	The antibody was affinity-purified from rabbit antiserum by affinity-chromatography using epitope-specific immunogen.
Suggested Dilutions	<p>Dilute the sample so that the expected range of concentrations fall within the detection range of this kit.</p> <p>If the expected range of concentration is unknown, a pilot test should be conducted to decide the optimal dilution ratio for your samples.</p> <p>Some PubMed article(s) citing the expression level of this target are as follows:</p> <p>Boster Bio's internal QC testing used:</p> <p>Western blotting: 1:500~1:3000</p> <p>Immunohistochemistry: 1:50~1:100</p>

Anti-TUT1/Tutase Antibody (A09330) Images



Western blot analysis of extracts from 3T3 cells, using TUT1 antibody A09330.



Immunohistochemistry analysis of paraffin-embedded human colon carcinoma tissue using TUT1 antibody A09330.

Submit a product review to Biocompare.com

Submit a review of this product to Biocompare.com to receive a \$20 Amazon.com giftcard! Your reviews help your fellow scientists make the right decisions. Thank you for your contribution.



Anti-TUT1/Tutase Antibody