

Anti-Mammaglobin SCGB2A2 Antibody

Catalog Number: A09363-1

About SCGB2A2

Belongs to the secretoglobulin family. Lipophilin subfamily. 2 isoforms of the human protein are produced by alternative splicing.?

Kishore Narayanan, J Natl Cancer Inst, Sep 2004; 96: 1388 - 1396.

Jonine L. Bernstein, Clin. Cancer Res., Sep 2005; 11: 6528 - 6535.

Barbara K. Zehentner, Clin. Chem., Nov 2004; 50: 2069 - 2076.

Paul N. Span, J. Clin. Oncol., Feb 2004; 22: 691 - 698.

Overview

Product Name	Anti-Mammaglobin SCGB2A2 Antibody
Reactive Species	Human, Rat
Description	Boster Bio Anti-Mammaglobin SCGB2A2 Antibody (Catalog # A09363-1). Tested in WB, IHC, IF applications. This antibody reacts with Human, Rat.
Application	IF, IHC, WB
Clonality	Polyclonal
Formulation	Rabbit IgG in phosphate buffered saline (without Mg ²⁺ and Ca ²⁺), pH 7.4, 150mM NaCl, 0.02% sodium azide and 50% glycerol.
Storage Instructions	Store at -20°C for one year. For short term storage and frequent use, store at 4°C for up to one month. Avoid repeated freeze-thaw cycles.
Host	Rabbit
Uniprot ID	Q13296

Technical Details

Immunogen	Synthesized peptide derived from human mammaglobin .
Predicted Reactive Species	Chimpanzee, Drosophila, Macaque
Isotype	IgG
Form	Liquid
Concentration	1 mg/ml
Purification	The antibody was affinity-purified from rabbit antiserum by affinity-chromatography using epitope-specific immunogen.

Suggested Dilutions

Dilute the sample so that the expected range of concentrations fall within the detection range of this kit.

If the expected range of concentration is unknown, a pilot test should be conducted to decide the optimal dilution ratio for your samples.

Some PubMed article(s) citing the expression level of this target are as follows:

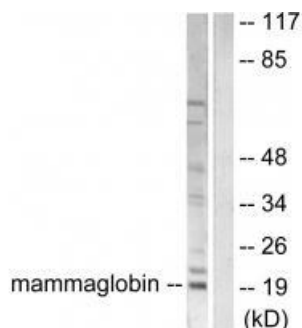
Boster Bio's internal QC testing used:

Western blotting: 1:500~1:3000

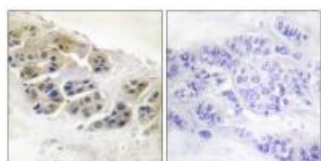
Immunohistochemistry: 1:50~1:100

Immunofluorescence: 1:100~1:500

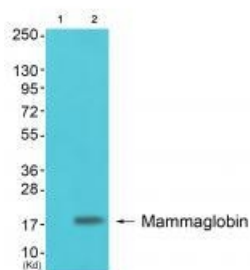
Anti-Mammaglobin SCGB2A2 Antibody (A09363-1) Images



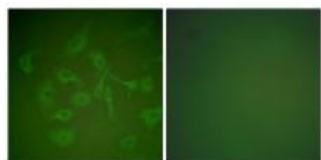
Western blot analysis of extracts from HepG2 cells, using Mammaglobin antibody A09363-1.



Immunohistochemistry analysis of paraffin-embedded human breast carcinoma tissue using Mammaglobin antibody A09363-1.



Western blot analysis of extracts from Colo cells (Lane 2), using Mammaglobin antibody A09363-1. The lane on the left is treated with synthesized peptide.



Immunofluorescence analysis of HepG2 cells, using Mammaglobin antibody A09363-1.

Submit a product review to Biocompare.com

Submit a review of this product to Biocompare.com to receive a \$20 Amazon.com giftcard! Your reviews help your fellow scientists make the right decisions. Thank you for your contribution.



Anti-Mammaglobin SCGB2A2 Antibody