

Anti-SCARF2/Srec Ii Antibody

Catalog Number: A09493

About SCARF2

Probable adhesion protein, which mediates homophilic and heterophilic interactions. In contrast to SCARF1, it poorly mediates the binding and degradation of acetylated low density lipoprotein (Ac-LDL) By similarity.

Ishii J., J. Biol. Chem. 277:39696-39702(2002).

Sjoebloom T., Science 314:268-274(2006).

Overview

Product Name	Anti-SCARF2/Srec Ii Antibody
Reactive Species	Human
Description	Boster Bio Anti-SCARF2/Srec Ii Antibody (Catalog # A09493). Tested in IHC applications. This antibody reacts with Human.
Application	IHC
Clonality	Polyclonal
Formulation	Rabbit IgG in phosphate buffered saline (without Mg ²⁺ and Ca ²⁺), pH 7.4, 150mM NaCl, 0.02% sodium azide and 50% glycerol.
Storage Instructions	Store at -20°C for one year. For short term storage and frequent use, store at 4°C for up to one month. Avoid repeated freeze-thaw cycles.
Host	Rabbit
Uniprot ID	Q96GP6

Technical Details

Immunogen	Synthesized peptide derived from internal of human SCARF2.
Predicted Reactive Species	Chimpanzee, Drosophila, Macaque
Isotype	IgG
Form	Liquid
Concentration	1 mg/ml
Purification	The antibody was affinity-purified from rabbit antiserum by affinity-chromatography using epitope-specific immunogen.
Suggested Dilutions	Dilute the sample so that the expected range of concentrations fall within the detection range of this

kit.

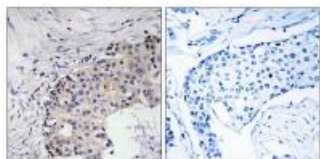
If the expected range of concentration is unknown, a pilot test should be conducted to decide the optimal dilution ratio for your samples.

Some PubMed article(s) citing the expression level of this target are as follows:

Boster Bio's internal QC testing used:

Immunohistochemistry: 1:50~1:100

Anti-SCARF2/Srec li Antibody (A09493) Images



Immunohistochemistry analysis of paraffin-embedded human breast carcinoma tissue using SCARF2 antibody A09493.

Submit a product review to Biocompare.com

Submit a review of this product to Biocompare.com to receive a \$20 Amazon.com giftcard! Your reviews help your fellow scientists make the right decisions. Thank you for your contribution.



Anti-SCARF2/Srec li Antibody