

## Anti-SCFD1 Antibody

Catalog Number: A09509

### About SCFD1

Plays a role in SNARE-pin assembly and Golgi-to-ER retrograde transport via its interaction with COG4. Involved in vesicular transport between the endoplasmic reticulum and the Golgi By similarity.

Nagase T., DNA Res. 5:355-364(1998).

Song H., Submitted (DEC-1998) to the EMBL/GenBank/DDBJ databases.

Wang Y.-G., Submitted (NOV-2000) to the EMBL/GenBank/DDBJ databases.

### Overview

Product Name	Anti-SCFD1 Antibody
Reactive Species	Human
Description	Boster Bio Anti-SCFD1 Antibody (Catalog # A09509). Tested in WB applications. This antibody reacts with Human.
Application	WB
Clonality	Polyclonal
Formulation	Rabbit IgG in phosphate buffered saline (without Mg <sup>2+</sup> and Ca <sup>2+</sup> ), pH 7.4, 150mM NaCl, 0.02% sodium azide and 50% glycerol.
Storage Instructions	Store at -20°C for one year. For short term storage and frequent use, store at 4°C for up to one month. Avoid repeated freeze-thaw cycles.
Host	Rabbit
Uniprot ID	Q8WVM8

### Technical Details

Immunogen	Synthesized peptide derived from C-terminal of human SCFD1.
Predicted Reactive Species	Chimpanzee, Drosophila, Macaque
Isotype	IgG
Form	Liquid
Concentration	1 mg/ml
Purification	The antibody was affinity-purified from rabbit antiserum by affinity-chromatography using epitope-specific immunogen.

**Suggested Dilutions**

Dilute the sample so that the expected range of concentrations fall within the detection range of this kit.

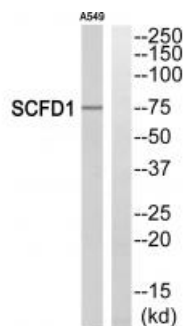
If the expected range of concentration is unknown, a pilot test should be conducted to decide the optimal dilution ratio for your samples.

Some PubMed article(s) citing the expression level of this target are as follows:

Boster Bio's internal QC testing used:

Western blotting: 1:500~1:3000

## Anti-SCFD1 Antibody (A09509) Images



Western blot analysis of extracts from A549 cells, using SCFD1 antibody A09509.

## Submit a product review to Biocompare.com

Submit a review of this product to Biocompare.com to receive a \$20 Amazon.com giftcard! Your reviews help your fellow scientists make the right decisions. Thank you for your contribution.



Anti-SCFD1 Antibody