

## Anti-DCLK2/Dcamk12 Antibody

Catalog Number: A09671

### About DCLK2

Protein kinase with a significantly reduced C(a2+)/CAM affinity and dependence compared to other members of the CaMK family. May play a role in the down-regulation of CRE-dependent gene activation probably by phosphorylation of the CREB coactivator CRTC2/TORC2 and the resulting retention of TORC2 in the cytoplasm. By similarity.

Totoki Y., Submitted (MAR-2005) to the EMBL/GenBank/DDBJ databases.

Hillier L.W., Nature 434:724-731(2005).

The German cDNA consortium, Submitted (JUL-2002) to the EMBL/GenBank/DDBJ databases.

### Overview

|                      |  |
|----------------------|--|
| Product Name         | Anti-DCLK2/Dcamk12 Antibody  |
| Reactive Species     | Human, Mouse   |
| Description          | Boster Bio Anti-DCLK2/Dcamk12 Antibody (Catalog # A09671). Tested in WB applications. This antibody reacts with Human, Mouse.                      |
| Application          | WB   |
| Clonality            | Polyclonal   |
| Formulation          | Rabbit IgG in phosphate buffered saline (without Mg <sup>2+</sup> and Ca <sup>2+</sup> ), pH 7.4, 150mM NaCl, 0.02% sodium azide and 50% glycerol. |
| Storage Instructions | Store at -20°C for one year. For short term storage and frequent use, store at 4°C for up to one month. Avoid repeated freeze-thaw cycles.         |
| Host                 | Rabbit   |
| Uniprot ID           | Q8N568   |

### Technical Details

|                            |  |
|----------------------------|--|
| Immunogen                  | Synthesized peptide derived from internal of human DCLK2.  |
| Predicted Reactive Species | Chimpanzee, Drosophila, Macaque  |
| Isotype                    | IgG  |
| Form                       | Liquid   |
| Concentration              | 1 mg/ml  |
| Purification               | The antibody was affinity-purified from rabbit antiserum by affinity-chromatography using epitope- |

specific immunogen.

**Suggested Dilutions**

Dilute the sample so that the expected range of concentrations fall within the detection range of this kit.

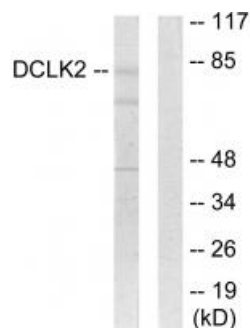
If the expected range of concentration is unknown, a pilot test should be conducted to decide the optimal dilution ratio for your samples.

Some PubMed article(s) citing the expression level of this target are as follows:

Boster Bio's internal QC testing used:

Western blotting: 1:500~1:3000

## Anti-DCLK2/Dcamk12 Antibody (A09671) Images



Western blot analysis of extracts from HepG2 cells, using DCLK2 antibody A09671.

### Submit a product review to Biocompare.com

Submit a review of this product to Biocompare.com to receive a \$20 Amazon.com giftcard! Your reviews help your fellow scientists make the right decisions. Thank you for your contribution.



Anti-DCLK2/Dcamk12 Antibody