

## Anti-Cysteine protease ATG4C ATG4C Antibody

Catalog Number: A09728-1

### About ATG4C

Cysteine protease required for the cytoplasm to vacuole transport (Cvt) and autophagy. Is not essential for autophagy development under normal conditions but is required for a proper autophagic response under stressful conditions such as prolonged starvation. By similarity. Cleaves the C-terminal amino acid of ATG8 family proteins MAP1LC3 and GABARAPL2, to reveal a C-terminal glycine. Exposure of the glycine at the C-terminus is essential for ATG8 proteins conjugation to phosphatidylethanolamine (PE) and insertion to membranes, which is necessary for autophagy. Has also an activity of delipidating enzyme for the PE-conjugated forms.

Marino G., J. Biol. Chem. 278:3671-3678(2003).

Chen J.M., Submitted (JUL-2001) to the EMBL/GenBank/DDBJ databases.

Ota T., Nat. Genet. 36:40-45(2004).

### Overview

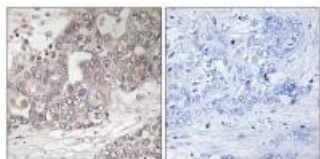
Product Name	Anti-Cysteine protease ATG4C ATG4C Antibody
Reactive Species	Human, Mouse
Description	Boster Bio Anti-Cysteine protease ATG4C ATG4C Antibody (Catalog # A09728-1). Tested in WB, IHC, IF applications. This antibody reacts with Human, Mouse.
Application	IF, IHC, WB
Clonality	Polyclonal
Formulation	Rabbit IgG in phosphate buffered saline (without Mg <sup>2+</sup> and Ca <sup>2+</sup> ), pH 7.4, 150mM NaCl, 0.02% sodium azide and 50% glycerol.
Storage Instructions	Store at -20°C for one year. For short term storage and frequent use, store at 4°C for up to one month. Avoid repeated freeze-thaw cycles.
Host	Rabbit
Uniprot ID	Q96DT6

### Technical Details

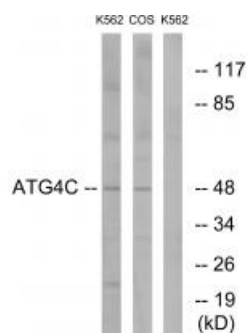
Immunogen	Synthesized peptide derived from internal of human ATG4C.
Predicted Reactive Species	Chimpanzee, Drosophila, Macaque
Isotype	IgG
Form	Liquid
Concentration	1 mg/ml

Purification	The antibody was affinity-purified from rabbit antiserum by affinity-chromatography using epitope-specific immunogen.
Suggested Dilutions	<p>Dilute the sample so that the expected range of concentrations fall within the detection range of this kit.</p> <p>If the expected range of concentration is unknown, a pilot test should be conducted to decide the optimal dilution ratio for your samples.</p> <p>Some PubMed article(s) citing the expression level of this target are as follows:</p> <p>Boster Bio's internal QC testing used:</p> <p>Western blotting: 1:500~1:3000</p> <p>Immunohistochemistry: 1:50~1:100</p> <p>Immunofluorescence: 1:100~1:500</p>

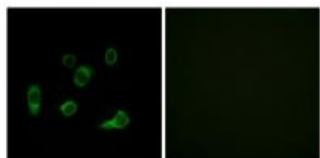
## Anti-Cysteine protease ATG4C ATG4C Antibody (A09728-1) Images



Immunohistochemistry analysis of paraffin-embedded human liver carcinoma tissue using ATG4C antibody A09728-1.



Western blot analysis of extracts from K562 cells and COS7 cells, using ATG4C antibody A09728-1.



Immunofluorescence analysis of HuvEc cells, using ATG4C antibody A09728-1.

### Submit a product review to Biocompare.com

Submit a review of this product to Biocompare.com to receive a \$20 Amazon.com giftcard! Your reviews help your fellow scientists make the right decisions. Thank you for your contribution.



Anti-Cysteine protease ATG4C ATG4C Antibody