

Anti-MICOS complex subunit MIC25 CHCHD6 Antibody

Catalog Number: A09965

About CHCHD6

CHCHD6 is a member of a family of proteins containing a conserved (coiled coil 1)-(helix 1)-(coiled coil 2)-(helix 2) domain and has been observed in a complex with the mitochondrial proteins mitofilin, SAM50, metaxins 1 and 2, and CHCHD3. CHCHD6 knockdown causes severe defects in mitochondrial cristae morphology as well as reductions in cell growth, ATP production and oxygen consumption. This decrease of CHCHD6 also led to a reduction in mitofilin protein levels, while a knockdown of mitofilin resulted in a reduced level of CHCHD6, suggesting coordinate regulation between these two proteins. CHCHD6 knockdown in human cancer cells enhances their sensitivity to genotoxic anticancer drugs, suggesting that CHCHD6 may be a potential therapeutic anti-tumor target.

Overview

Product Name	Anti-MICOS complex subunit MIC25 CHCHD6 Antibody
Reactive Species	Human
Description	Boster Bio Anti-MICOS complex subunit MIC25 CHCHD6 Antibody (Catalog # A09965). Tested in ELISA, WB applications. This antibody reacts with Human.
Application	ELISA, WB
Clonality	Polyclonal Clone: SK7
Formulation	CHCHD6 Antibody is supplied in PBS containing 0.02% sodium azide.
Storage Instructions	CHCHD6 antibody can be stored at 4°C for three months and -20°C, stable for up to one year.
Host	Rabbit
Uniprot ID	Q9BRQ6

Technical Details

Immunogen	Rabbit polyclonal CHCHD6 antibody was raised against a 17 amino acid peptide near the amino terminus of human CHCHD6. The immunogen is located within amino acids 20 - 70 of CHCHD6.
Predicted Reactive Species	Bovine, Chicken
Cross Reactivity	CHCHD6 is predicted to not cross-react to other members of the CHCHD family.
Isotype	IgG
Form	Liquid
Concentration	1 mg/mL
Purification	CHCHD6 Antibody is affinity chromatography purified via peptide column.

Suggested Dilutions

Dilute the sample so that the expected range of concentrations fall within the detection range of this kit.

If the expected range of concentration is unknown, a pilot test should be conducted to decide the optimal dilution ratio for your samples.

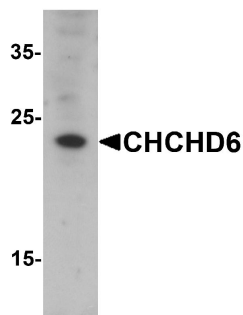
Some PubMed article(s) citing the expression level of this target are as follows:

Boster Bio's internal QC testing used:

CHCHD6 antibody can be used for detection of CHCHD6 by Western blot at 1 - 2 ug/mL.

Antibody validated: Western Blot in human samples. All other applications and species not yet tested. Optimal dilutions for each application should be determined by the researcher.

Anti-MICOS complex subunit MIC25 CHCHD6 Antibody (A09965) Images



Western blot analysis of CHCHD6 in SK-N-SH cell lysate with CHCHD6 antibody at 1 ug/mL.

Submit a product review to Biocompare.com

Submit a review of this product to Biocompare.com to receive a \$20 Amazon.com giftcard! Your reviews help your fellow scientists make the right decisions. Thank you for your contribution.



Anti-MICOS complex subunit MIC25 CHCHD6 Antibody