

Anti-MAPK15 Antibody

Catalog Number: A10088

About MAPK15

In vitro, phosphorylates MBP.

Abe M.K., J. Biol. Chem. 277:16733-16743(2002).

Iavarone C., J. Biol. Chem. 281:10567-10576(2006).

Saelzler M.P., J. Biol. Chem. 281:16821-16832(2006).

Overview

Product Name	Anti-MAPK15 Antibody
Reactive Species	Human
Description	Boster Bio Anti-MAPK15 Antibody (Catalog # A10088). Tested in IHC, IF applications. This antibody reacts with Human.
Application	IF, IHC
Clonality	Polyclonal
Formulation	Rabbit IgG in phosphate buffered saline (without Mg ²⁺ and Ca ²⁺), pH 7.4, 150mM NaCl, 0.02% sodium azide and 50% glycerol.
Storage Instructions	Store at -20°C for one year. For short term storage and frequent use, store at 4°C for up to one month. Avoid repeated freeze-thaw cycles.
Host	Rabbit
Uniprot ID	Q8TD08

Technical Details

Immunogen	Synthesized peptide derived from internal of human MAPK15.
Predicted Reactive Species	Chimpanzee, Drosophila, Macaque
Isotype	IgG
Form	Liquid
Concentration	1 mg/ml
Purification	The antibody was affinity-purified from rabbit antiserum by affinity-chromatography using epitope-specific immunogen.
Suggested Dilutions	Dilute the sample so that the expected range of concentrations fall within the detection range of this

kit.

If the expected range of concentration is unknown, a pilot test should be conducted to decide the optimal dilution ratio for your samples.

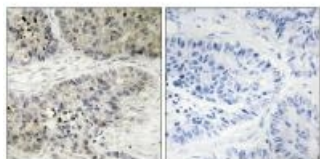
Some PubMed article(s) citing the expression level of this target are as follows:

Boster Bio's internal QC testing used:

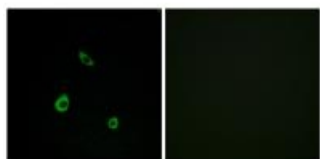
Immunohistochemistry: 1:50~1:100

Immunofluorescence: 1:100~1:500

Anti-MAPK15 Antibody (A10088) Images



Immunohistochemistry analysis of paraffin-embedded human lung carcinoma tissue, using MAPK15 antibody A10088.



Immunofluorescence analysis of LOVO cells, using MAPK15 antibody A10088.

Submit a product review to Biocompare.com

Submit a review of this product to Biocompare.com to receive a \$20 Amazon.com giftcard! Your reviews help your fellow scientists make the right decisions. Thank you for your contribution.



Anti-MAPK15 Antibody