

## Anti-ATP5D Antibody

Catalog Number: A10129-1

### Overview

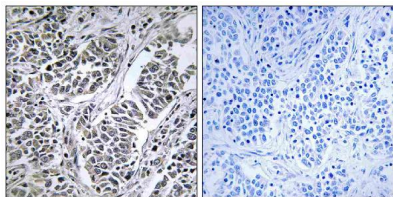
|                      |                                                                                                                                                |
|----------------------|------------------------------------------------------------------------------------------------------------------------------------------------|
| Product Name         | Anti-ATP5D Antibody                                                                                                                            |
| Reactive Species     | Human, Mouse, Rat                                                                                                                              |
| Description          | Boster Bio Anti-ATP5D Antibody (Catalog# A10129-1). Tested in IHC-P, IF, ICC, ELISA applications. This antibody reacts with Human, Mouse, Rat. |
| Application          | ELISA, IF, IHC-P, ICC                                                                                                                          |
| Clonality            | Polyclonal                                                                                                                                     |
| Formulation          | PBS containing 50% glycerol, 0.5% BSA and 0.02% sodium azide.                                                                                  |
| Storage Instructions | Store at -20°C for one year. For short-term storage and frequent use, store at 4°C for up to one month. Avoid repeated freeze-thaw cycles.     |
| Host                 | Rabbit                                                                                                                                         |
| Uniprot ID           | P30049                                                                                                                                         |

### Technical Details

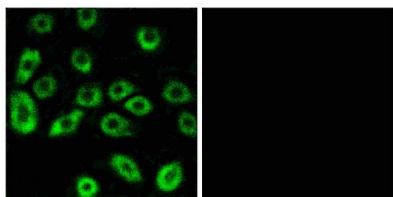
|                            |                                                                                                                                                                                                                                                                                                                                                                                                                                                                                                                                                                     |
|----------------------------|---------------------------------------------------------------------------------------------------------------------------------------------------------------------------------------------------------------------------------------------------------------------------------------------------------------------------------------------------------------------------------------------------------------------------------------------------------------------------------------------------------------------------------------------------------------------|
| Immunogen                  | A peptide derived from human ATP5D. Immunogen sequence location: 61-110                                                                                                                                                                                                                                                                                                                                                                                                                                                                                             |
| Predicted Reactive Species | Bovine, Canine, Chicken, Primate, Sheep, Xenopus, Zebrafish                                                                                                                                                                                                                                                                                                                                                                                                                                                                                                         |
| Isotype                    | Rabbit IgG                                                                                                                                                                                                                                                                                                                                                                                                                                                                                                                                                          |
| Form                       | Liquid                                                                                                                                                                                                                                                                                                                                                                                                                                                                                                                                                              |
| Concentration              | 0.5-1mg/ml, actual concentration vary by lot. Use suggested dilution ratio to decide dilution procedure.                                                                                                                                                                                                                                                                                                                                                                                                                                                            |
| Purification               | The antibody was purified from rabbit antiserum by affinity-chromatography using immunogen.                                                                                                                                                                                                                                                                                                                                                                                                                                                                         |
| Suggested Dilutions        | <p>Dilute the sample so that the expected range of concentrations fall within the detection range of this kit.</p> <p>If the expected range of concentration is unknown, a pilot test should be conducted to decide the optimal dilution ratio for your samples.</p> <p>Some PubMed article(s) citing the expression level of this target are as follows:</p> <p>Boster Bio's internal QC testing used:</p> <p>Immunohistochemistry, 1:100 - 1:300</p> <p>Immunofluorescence, 1:200 - 1:1000</p> <p>ELISA, 1:20000</p> <p>Not yet tested in other applications.</p> |



## Anti-ATP5D Antibody (A10129-1) Images



Immunohistochemistry analysis of paraffin-embedded human lung carcinoma tissue, using ATP5D Antibody. The picture on the right is blocked with the synthesized peptide.



Immunofluorescence analysis of A549 cells, using ATP5D Antibody. The picture on the right is blocked with the synthesized peptide.

## Submit a product review to Biocompare.com

Submit a review of this product to Biocompare.com to receive a \$20 Amazon.com giftcard! Your reviews help your fellow scientists make the right decisions. Thank you for your contribution.



Anti-ATP5D Antibody