

## Anti-LAMC3/Laminin Gamma 3 Antibody

Catalog Number: A10229

### About LAMC3

Binding to cells via a high affinity receptor, laminin is thought to mediate the attachment, migration and organization of cells into tissues during embryonic development by interacting with other extracellular matrix components.

Koch M., J. Cell Biol. 145:605-618(1999).  
Humphray S.J., Nature 429:369-374(2004).

### Overview

Product Name	Anti-LAMC3/Laminin Gamma 3 Antibody
Reactive Species	Human, Mouse
Description	Boster Bio Anti-LAMC3/Laminin Gamma 3 Antibody (Catalog # A10229). Tested in WB, IHC, IF applications. This antibody reacts with Human, Mouse.
Application	IF, IHC, WB
Clonality	Polyclonal
Formulation	Rabbit IgG in phosphate buffered saline (without Mg <sup>2+</sup> and Ca <sup>2+</sup> ), pH 7.4, 150mM NaCl, 0.02% sodium azide and 50% glycerol.
Storage Instructions	Store at -20°C for one year. For short term storage and frequent use, store at 4°C for up to one month. Avoid repeated freeze-thaw cycles.
Host	Rabbit
Uniprot ID	Q9Y6N6

### Technical Details

Immunogen	Synthesized peptide derived from internal of human LAMC3.
Predicted Reactive Species	Chimpanzee, Drosophila, Macaque
Isotype	IgG
Form	Liquid
Concentration	1 mg/ml
Purification	The antibody was affinity-purified from rabbit antiserum by affinity-chromatography using epitope-specific immunogen.
Suggested Dilutions	Dilute the sample so that the expected range of concentrations fall within the detection range of this

kit.

If the expected range of concentration is unknown, a pilot test should be conducted to decide the optimal dilution ratio for your samples.

Some PubMed article(s) citing the expression level of this target are as follows:

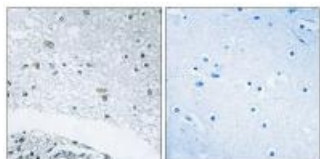
Boster Bio's internal QC testing used:

Western blotting: 1:500~1:3000

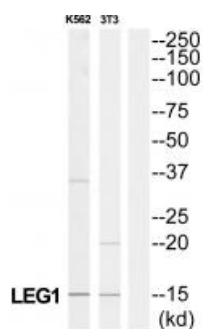
Immunohistochemistry: 1:50~1:100

Immunofluorescence: 1:100~1:500

## Anti-LAMC3/Laminin Gamma 3 Antibody (A10229) Images



Immunohistochemistry analysis of paraffin-embedded human brain tissue using LAMC3 antibody A10229.



Western blot analysis of extracts from K562 cells and 3T3 cells, using LAMC3 antibody A10229.



Immunofluorescence analysis of LOVO cells, using LAMC3 antibody A10229.

## Submit a product review to Biocompare.com

Submit a review of this product to Biocompare.com to receive a \$20 Amazon.com giftcard! Your reviews help your fellow scientists make the right decisions. Thank you for your contribution.



Anti-LAMC3/Laminin Gamma 3 Antibody