

Anti-Protein S100-A5 S100A5 Antibody

Catalog Number: A10314

About S100A5

Binds calcium, zinc and copper. One subunit can simultaneously bind 2 calcium ions or 2 copper ions plus 1 zinc ion. Calcium and copper ions compete for the same binding sites.

Engelkamp D., Proc. Natl. Acad. Sci. U.S.A. 90:6547-6551(1993).

Gregory S.G., Nature 441:315-321(2006).

Overview

Product Name	Anti-Protein S100-A5 S100A5 Antibody
Reactive Species	Human, Mouse, Rat
Description	Boster Bio Anti-Protein S100-A5 S100A5 Antibody (Catalog # A10314). Tested in WB applications. This antibody reacts with Human, Mouse, Rat.
Application	WB
Clonality	Polyclonal
Formulation	Rabbit IgG in phosphate buffered saline (without Mg ²⁺ and Ca ²⁺), pH 7.4, 150mM NaCl, 0.02% sodium azide and 50% glycerol.
Storage Instructions	Store at -20°C for one year. For short term storage and frequent use, store at 4°C for up to one month. Avoid repeated freeze-thaw cycles.
Host	Rabbit
Uniprot ID	P33763

Technical Details

Immunogen	Synthesized peptide derived from internal of human S100A5.
Predicted Reactive Species	Chimpanzee, Drosophila, Macaque
Isotype	IgG
Form	Liquid
Concentration	1 mg/ml
Purification	The antibody was affinity-purified from rabbit antiserum by affinity-chromatography using epitope-specific immunogen.
Suggested Dilutions	Dilute the sample so that the expected range of concentrations fall within the detection range of this

kit.

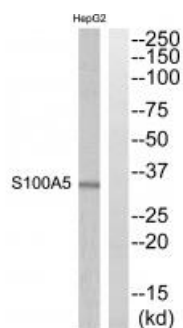
If the expected range of concentration is unknown, a pilot test should be conducted to decide the optimal dilution ratio for your samples.

Some PubMed article(s) citing the expression level of this target are as follows:

Boster Bio's internal QC testing used:

Western blotting: 1:500~1:3000

Anti-Protein S100-A5 S100A5 Antibody (A10314) Images



Western blot analysis of extracts from HepG2 cells, using S100A5 antibody A10314.

Submit a product review to Biocompare.com

Submit a review of this product to Biocompare.com to receive a \$20 Amazon.com giftcard! Your reviews help your fellow scientists make the right decisions. Thank you for your contribution.



Anti-Protein S100-A5 S100A5 Antibody