

## Anti-MRPL44 Antibody

Catalog Number: A10898

### About MRPL44

Component of the 39S subunit of mitochondrial ribosome. May have a function in the assembly/stability of nascent mitochondrial polypeptides exiting the ribosome.

Ota T., Nat. Genet. 36:40-45(2004).

Ebert L., Submitted (JUN-2004) to the EMBL/GenBank/DDBJ databases.

Hillier L.W., Nature 434:724-731(2005).

### Overview

Product Name	Anti-MRPL44 Antibody
Reactive Species	Human, Mouse, Rat
Description	Boster Bio Anti-MRPL44 Antibody (Catalog # A10898). Tested in WB, IHC, IF applications. This antibody reacts with Human, Mouse, Rat.
Application	IF, IHC, WB
Clonality	Polyclonal
Formulation	Rabbit IgG in phosphate buffered saline (without Mg <sup>2+</sup> and Ca <sup>2+</sup> ), pH 7.4, 150mM NaCl, 0.02% sodium azide and 50% glycerol.
Storage Instructions	Store at -20°C for one year. For short term storage and frequent use, store at 4°C for up to one month. Avoid repeated freeze-thaw cycles.
Host	Rabbit
Uniprot ID	Q9H9J2

### Technical Details

Immunogen	Synthesized peptide derived from internal of human MRPL44.
Predicted Reactive Species	Chimpanzee, Drosophila, Macaque
Isotype	IgG
Form	Liquid
Concentration	1 mg/ml
Purification	The antibody was affinity-purified from rabbit antiserum by affinity-chromatography using epitope-specific immunogen.

**Suggested Dilutions**

Dilute the sample so that the expected range of concentrations fall within the detection range of this kit.

If the expected range of concentration is unknown, a pilot test should be conducted to decide the optimal dilution ratio for your samples.

Some PubMed article(s) citing the expression level of this target are as follows:

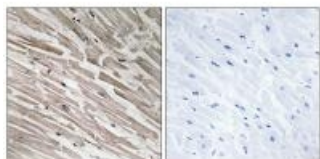
Boster Bio's internal QC testing used:

Western blotting: 1:500~1:3000

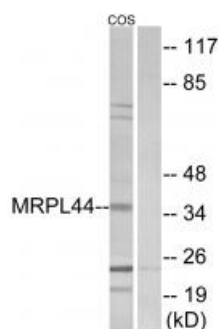
Immunohistochemistry: 1:50~1:100

Immunofluorescence: 1:100~1:500

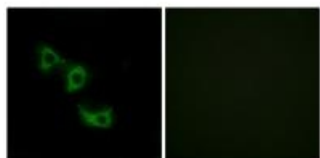
## Anti-MRPL44 Antibody (A10898) Images



Immunohistochemistry analysis of paraffin-embedded human heart tissue using MRPL44 antibody A10898.



Western blot analysis of extracts from COS-7 cells, using MRPL44 antibody A10898.



Immunofluorescence analysis of HuvEc cells, using MRPL44 antibody A10898.

## Submit a product review to Biocompare.com

Submit a review of this product to Biocompare.com to receive a \$20 Amazon.com giftcard! Your reviews help your fellow scientists make the right decisions. Thank you for your contribution.



Anti-MRPL44 Antibody