

Anti-synaptophysin 2 Synpr Antibody

Catalog Number: A11201

About SYNPR

Synaptophysin (SYP) is a neuronal synaptic vesicle glycoprotein that is expressed in neuroendocrine cells and neoplasms, and thus can be used as a marker in tumor diagnosis (1). Synaptophysin contains four transmembrane domains that form a hexameric channel or gap junction-like pore (2). Synaptophysin binds to the SNARE protein synaptobrevin/VAMP, which prevents the inclusion of synaptobrevin in the synaptic vesicle fusion complex and creates a pool of synaptobrevin for exocytosis when synapse activity increases (3). Synaptophysin is also responsible for targeting synaptobrevin 2/VAMP2 to synaptic vesicles, a critical component of the fusion complex (4).

Wiedenmann, B. et al. (1986) Proc Natl Acad Sci USA 83, 3500-4.

Valtorta, F. et al. (2004) Bioessays 26, 445-53.

Arthur, C.P. and Stowell, M.H. (2007) Structure 15, 707-14.

Bonanomi, D. et al. (2007) Biochem J 404, 525-34.

Overview

Product Name	Anti-synaptophysin 2 Synpr Antibody
Reactive Species	Human, Mouse, Rat
Description	Boster Bio Anti-synaptophysin 2 Synpr Antibody (Catalog # A11201). Tested in WB applications. This antibody reacts with Human, Mouse, Rat.
Application	WB
Clonality	Polyclonal 3A8
Formulation	Supplied at 1.0mg/mL in phosphate buffered saline (without Mg ²⁺ and Ca ²⁺), pH 7.4, 150mM NaCl, 0.02% sodium azide and 50% glycerol.
Storage Instructions	Store at -20°C for one year. For short term storage and frequent use, store at 4°C for up to one month. Avoid repeated freeze-thaw cycles.
Host	Rabbit
Uniprot ID	P22831

Technical Details

Immunogen	Peptide sequence around aa.257~261(G-P-T-S-F)derived from Rat synaptophysin 2.
Predicted Reactive Species	Bovine, Canine, Equine, Guinea Pig, Pig
Isotype	IgG
Form	Liquid

Concentration	1 mg/ml
Purification	Antibodies were produced by immunizing rabbits with synthetic peptide and KLH conjugates. Antibodies were purified by affinity-chromatography using epitope-specific peptide.
Suggested Dilutions	Dilute the sample so that the expected range of concentrations fall within the detection range of this kit. If the expected range of concentration is unknown, a pilot test should be conducted to decide the optimal dilution ratio for your samples. Some PubMed article(s) citing the expression level of this target are as follows: Boster Bio's internal QC testing used: Predicted MW: 37kd Western blotting: 1:500~1:1000

Anti-synaptophysin 2 Synpr Antibody (A11201) Images

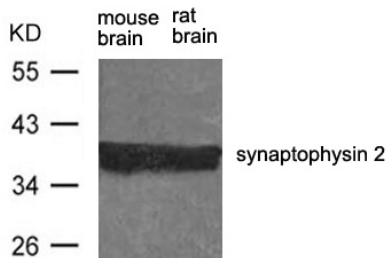


Figure 1. Western blot analysis of Synpr using anti-Synpr antibody (A11201).

Electrophoresis was performed on a 5-20% SDS-PAGE gel at 70V (Stacking gel) / 90V (Resolving gel) for 2-3 hours. The sample well of each lane was loaded with 50ug of sample under reducing conditions.

After Electrophoresis, proteins were transferred to a Nitrocellulose membrane at 150mA for 50-90 minutes. Blocked the membrane with 5% Non-fat Milk/ TBS for 1.5 hour at RT. The membrane was incubated with rabbit anti-Synpr antigen affinity purified polyclonal antibody (Catalog # A11201) at 0.5 ug/mL overnight at 4°C, then washed with TBS-0.1%Tween 3 times with 5 minutes each and probed with a goat anti-Rabbit IgG-HRP secondary antibody at a dilution of 1:10000 for 1.5 hour at RT. The signal is developed using an Enhanced Chemiluminescent detection (ECL) kit (Catalog # SA1022) with Tanon 5200 system. A specific band was detected for Synpr.

Submit a product review to Biocompare.com

Submit a review of this product to Biocompare.com to receive a \$20 Amazon.com giftcard! Your reviews help your fellow scientists make the right decisions. Thank you for your contribution.



Anti-synaptophysin 2 Synpr Antibody