

Anti-DEDD2 (DED4) Antibody

Catalog Number: A11263

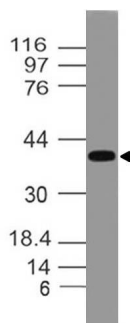
Overview

Product Name	Anti-DEDD2 (DED4) Antibody
Reactive Species	Canine, Human, Mouse, Rat
Description	Boster Bio Anti-DEDD2 (DED4) Antibody (Catalog# A11263). Tested in WB application(s). This antibody reacts with Canine, Rat, Mouse, Human.
Application	WB
Clonality	Polyclonal
Formulation	50 ul sera
Storage Instructions	Store the antibody at 4°C, stable for 6 months. For long-term storage, store at -20°C. Avoid repeated freeze and thaw cycles.
Host	Rabbit
Uniprot ID	Q8WXF8

Technical Details

Immunogen	A synthetic peptide of DEDD2 (DED4) protein (amino acids 210-228 GPALEQGVASRRPQALARQ)
Predicted Reactive Species	Mouse, Rat
Isotype	Rabbit IgG
Form	Liquid
Concentration	0.5-1mg/ml, actual concentration vary by lot. Use suggested dilution ratio to decide dilution procedure.
Suggested Dilutions	Dilute the sample so that the expected range of concentrations fall within the detection range of this kit. If the expected range of concentration is unknown, a pilot test should be conducted to decide the optimal dilution ratio for your samples. Some PubMed article(s) citing the expression level of this target are as follows: Boster Bio's internal QC testing used: WB: 1:1000-1:5000

Anti-DEDD2 (DED4) Antibody (A11263) Images



Western blot analysis of DEDD2 (DED4). Anti-DEDD2 (DED4) antibody was used with 1:1000 dilution on h Heart lysate.

Submit a product review to Biocompare.com

Submit a review of this product to Biocompare.com to receive a \$20 Amazon.com giftcard! Your reviews help your fellow scientists make the right decisions. Thank you for your contribution.



Anti-DEDD2 (DED4) Antibody