

## Anti-CaMK1-beta PNCK Antibody

Catalog Number: A11515

### Overview

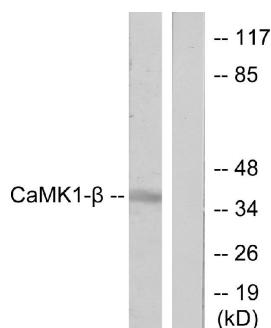
|                      |  |
|----------------------|--|
| Product Name         | Anti-CaMK1-beta PNCK Antibody  |
| Reactive Species     | Human, Mouse, Rat  |
| Description          | Boster Bio Anti-CaMK1-beta PNCK Antibody (Catalog# A11515). Tested in WB, IHC-P, IF (paraffin), ELISA applications. This antibody reacts with Human, Mouse, Rat. |
| Application          | ELISA, IHC-P, WB, IF (paraffin)  |
| Clonality            | Polyclonal   |
| Formulation          | PBS containing 50% glycerol, 0.5% BSA and 0.02% sodium azide.  |
| Storage Instructions | Store at -20°C for one year. For short-term storage and frequent use, store at 4°C for up to one month. Avoid repeated freeze-thaw cycles.                       |
| Host                 | Rabbit   |
| Uniprot ID           | Q6P2M8   |

### Technical Details

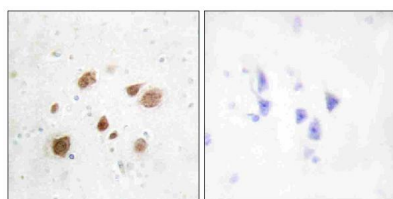
|                            |   |
|----------------------------|---|
| Immunogen                  | A peptide derived from human CaMK1-beta. Immunogen sequence location: 161-210   |
| Predicted Reactive Species | Bovine, Canine, Chicken, Primate, Sheep, Xenopus, Zebrafish   |
| Isotype                    | Rabbit IgG  |
| Form                       | Liquid  |
| Concentration              | 0.5-1mg/ml, actual concentration vary by lot. Use suggested dilution ratio to decide dilution procedure.  |
| Purification               | The antibody was purified from rabbit antiserum by affinity-chromatography using immunogen.   |
| Suggested Dilutions        | <p>Dilute the sample so that the expected range of concentrations fall within the detection range of this kit.</p> <p>If the expected range of concentration is unknown, a pilot test should be conducted to decide the optimal dilution ratio for your samples.</p> <p>Some PubMed article(s) citing the expression level of this target are as follows:</p> <p>Boster Bio's internal QC testing used:</p> <p>Western Blot, 1:500 - 1:2000</p> <p>Immunohistochemistry, 1:100 - 1:300</p> <p>ELISA, 1:10000</p> <p>Not yet tested in other applications.</p> |



## Anti-CaMK1-beta PNCK Antibody (A11515) Images



Western blot analysis of lysates from LOVO cells, treated with H<sub>2</sub>O<sub>2</sub> 100uM 30', using CaMK1-beta Antibody. The lane on the right is blocked with the synthesized peptide.



Immunohistochemistry analysis of paraffin-embedded human brain tissue, using CaMK1-beta Antibody. The picture on the right is blocked with the synthesized peptide.

## Submit a product review to Biocompare.com

Submit a review of this product to Biocompare.com to receive a \$20 Amazon.com giftcard! Your reviews help your fellow scientists make the right decisions. Thank you for your contribution.



Anti-CaMK1-beta PNCK Antibody