

Anti-GFM2/Ef G2 Antibody

Catalog Number: A11675

About GFM2

Mitochondrial GTPase that mediates the disassembly of ribosomes from messenger RNA at the termination of mitochondrial protein biosynthesis. Acts in collaboration with MRRF. GTP hydrolysis follows the ribosome disassembly and probably occurs on the ribosome large subunit. Not involved in the GTP-dependent ribosomal translocation step during translation elongation.

Hammarsund M., Hum. Genet. 109:542-550(2001).

Xu Y.Y., Submitted (DEC-1998) to the EMBL/GenBank/DDBJ databases.

The MGC Project Team; Genome Res. 14:2121-2127(2004).

Overview

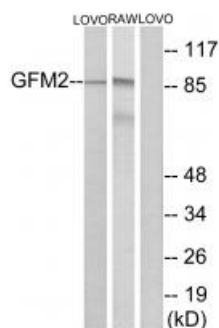
| | |
|----------------------|--|
| Product Name | Anti-GFM2/Ef G2 Antibody |
| Reactive Species | Human, Mouse |
| Description | Boster Bio Anti-GFM2/Ef G2 Antibody (Catalog # A11675). Tested in WB, IF applications. This antibody reacts with Human, Mouse. |
| Application | IF, WB |
| Clonality | Polyclonal |
| Formulation | Rabbit IgG in phosphate buffered saline (without Mg ²⁺ and Ca ²⁺), pH 7.4, 150mM NaCl, 0.02% sodium azide and 50% glycerol. |
| Storage Instructions | Store at -20°C for one year. For short term storage and frequent use, store at 4°C for up to one month. Avoid repeated freeze-thaw cycles. |
| Host | Rabbit |
| Uniprot ID | Q969S9 |

Technical Details

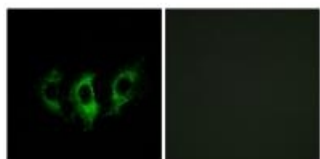
| | |
|----------------------------|--|
| Immunogen | Synthesized peptide derived from internal of human GFM2. |
| Predicted Reactive Species | Chimpanzee, Drosophila, Macaque |
| Isotype | IgG |
| Form | Liquid |
| Concentration | 1 mg/ml |
| Purification | The antibody was affinity-purified from rabbit antiserum by affinity-chromatography using epitope- |

| | |
|---------------------|--|
| | specific immunogen. |
| Suggested Dilutions | <p>Dilute the sample so that the expected range of concentrations fall within the detection range of this kit.</p> <p>If the expected range of concentration is unknown, a pilot test should be conducted to decide the optimal dilution ratio for your samples.</p> <p>Some PubMed article(s) citing the expression level of this target are as follows:</p> <p>Boster Bio's internal QC testing used:</p> <p>Western blotting: 1:500~1:3000</p> <p>Immunofluorescence: 1:100~1:500</p> |

Anti-GFM2/Ef G2 Antibody (A11675) Images



Western blot analysis of extracts from LOVO cells and RAW264.7 cells, using GFM2 antibody A11675.



Immunofluorescence analysis of A549 cells, using GFM2 antibody A11675.

Submit a product review to Biocompare.com

Submit a review of this product to Biocompare.com to receive a \$20 Amazon.com giftcard! Your reviews help your fellow scientists make the right decisions. Thank you for your contribution.



Anti-GFM2/Ef G2 Antibody