

## Anti-RPS4Y1 Antibody

Catalog Number: A11919

### About RPS4Y1

Cytoplasmic ribosomes, organelles that catalyze protein synthesis, consist of a small 40S subunit and a large 60S subunit. Together these subunits are composed of 4 RNA species and approximately 80 structurally distinct proteins. This gene encodes ribosomal protein S4, a component of the 40S subunit. Ribosomal protein S4 is the only ribosomal protein known to be encoded by more than one gene, namely this gene and ribosomal protein S4, X-linked (RPS4X). The 2 isoforms encoded by these genes are not identical, but are functionally equivalent. Ribosomal protein S4 belongs to the S4E family of ribosomal proteins. It has been suggested that haploinsufficiency of the ribosomal protein S4 genes plays a role in Turner syndrome; however, this hypothesis is controversial. As is typical for genes encoding ribosomal proteins, there are multiple processed pseudogenes of this gene dispersed through the genome.

Fisher E.M.C., Cell 63:1205-1218(1990).

Zuo L., Submitted (JAN-1998) to the EMBL/GenBank/DDBJ databases.

Zhang C., Submitted (DEC-1998) to the EMBL/GenBank/DDBJ databases.

### Overview

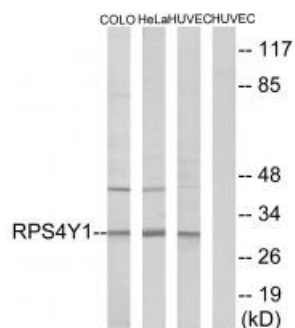
Product Name	Anti-RPS4Y1 Antibody
Reactive Species	Human
Description	Boster Bio Anti-RPS4Y1 Antibody (Catalog # A11919). Tested in WB, IF applications. This antibody reacts with Human.
Application	IF, WB
Clonality	Polyclonal
Formulation	Rabbit IgG in phosphate buffered saline (without Mg <sup>2+</sup> and Ca <sup>2+</sup> ), pH 7.4, 150mM NaCl, 0.02% sodium azide and 50% glycerol.
Storage Instructions	Store at -20°C for one year. For short term storage and frequent use, store at 4°C for up to one month. Avoid repeated freeze-thaw cycles.
Host	Rabbit
Uniprot ID	P22090

### Technical Details

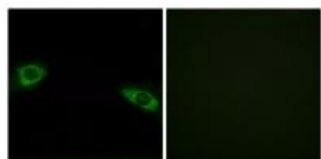
Immunogen	Synthesized peptide derived from C-terminal of human RPS4Y1.
Predicted Reactive Species	Chimpanzee, Drosophila, Macaque
Isotype	IgG

Form	Liquid
Concentration	1 mg/ml
Purification	The antibody was affinity-purified from rabbit antiserum by affinity-chromatography using epitope-specific immunogen.
Suggested Dilutions	<p>Dilute the sample so that the expected range of concentrations fall within the detection range of this kit.</p> <p>If the expected range of concentration is unknown, a pilot test should be conducted to decide the optimal dilution ratio for your samples.</p> <p>Some PubMed article(s) citing the expression level of this target are as follows:</p> <p>Boster Bio's internal QC testing used:</p> <p>Western blotting: 1:500~1:3000</p> <p>Immunofluorescence: 1:100~1:500</p>

## Anti-RPS4Y1 Antibody (A11919) Images



Western blot analysis of extracts from COLO cells, HeLa cells and HUVEC cells, using RPS4Y1 antibody A11919.



Immunofluorescence analysis of HuvEc cells, using RPS4Y1 antibody A11919.

## Submit a product review to Biocompare.com

Submit a review of this product to Biocompare.com to receive a \$20 Amazon.com giftcard! Your reviews help your fellow scientists make the right decisions. Thank you for your contribution.



Anti-RPS4Y1 Antibody