

Anti-Ras-related protein Rab-2B RAB2B Antibody

Catalog Number: A12256

About RAB2B

Required for protein transport from the endoplasmic reticulum to the Golgi complex Potential.

Ni X., J. Hum. Genet. 47:548-551(2002).

Ota T., Nat. Genet. 36:40-45(2004).

Mural R.J., Submitted (SEP-2005) to the EMBL/GenBank/DDBJ databases.

Overview

Product Name	Anti-Ras-related protein Rab-2B RAB2B Antibody
Reactive Species	Human
Description	Boster Bio Anti-Ras-related protein Rab-2B RAB2B Antibody (Catalog # A12256). Tested in WB applications. This antibody reacts with Human.
Application	WB
Clonality	Polyclonal
Formulation	Rabbit IgG in phosphate buffered saline (without Mg ²⁺ and Ca ²⁺), pH 7.4, 150mM NaCl, 0.02% sodium azide and 50% glycerol.
Storage Instructions	Store at -20°C for one year. For short term storage and frequent use, store at 4°C for up to one month. Avoid repeated freeze-thaw cycles.
Host	Rabbit
Uniprot ID	Q8WUD1

Technical Details

Immunogen	Synthesized peptide derived from internal of human RAB2B.
Predicted Reactive Species	Chimpanzee, Drosophila, Macaque
Isotype	IgG
Form	Liquid
Concentration	1 mg/ml
Purification	The antibody was affinity-purified from rabbit antiserum by affinity-chromatography using epitope-specific immunogen.
Suggested Dilutions	Dilute the sample so that the expected range of concentrations fall within the detection range of this

kit.

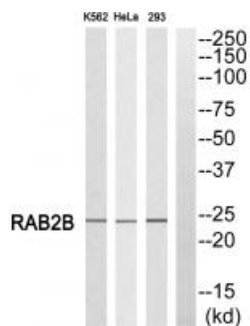
If the expected range of concentration is unknown, a pilot test should be conducted to decide the optimal dilution ratio for your samples.

Some PubMed article(s) citing the expression level of this target are as follows:

Boster Bio's internal QC testing used:

Western blotting: 1:500~1:3000

Anti-Ras-related protein Rab-2B RAB2B Antibody (A12256) Images



Western blot analysis of extracts from K562 cells, HeLa cells and 293 cells, using RAB2B antibody A12256.

Submit a product review to Biocompare.com

Submit a review of this product to Biocompare.com to receive a \$20 Amazon.com giftcard! Your reviews help your fellow scientists make the right decisions. Thank you for your contribution.



Anti-Ras-related protein Rab-2B RAB2B Antibody