

## Anti-LDLRAD1 Antibody

Catalog Number: A15115

### About LDLRAD1

Belongs to the LDLR family. 3 isoforms of the human protein are produced by alternative splicing.

Gregory S.G., Nature 441:315-321(2006).

The MGC Project Team; Genome Res. 14:2121-2127(2004).

### Overview

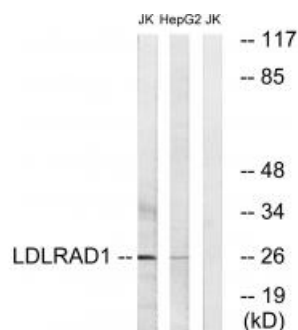
Product Name	Anti-LDLRAD1 Antibody
Reactive Species	Human
Description	Boster Bio Anti-LDLRAD1 Antibody (Catalog # A15115). Tested in WB applications. This antibody reacts with Human.
Application	WB
Clonality	Polyclonal
Formulation	Rabbit IgG in phosphate buffered saline (without Mg <sup>2+</sup> and Ca <sup>2+</sup> ), pH 7.4, 150mM NaCl, 0.02% sodium azide and 50% glycerol.
Storage Instructions	Store at -20°C for one year. For short term storage and frequent use, store at 4°C for up to one month. Avoid repeated freeze-thaw cycles.
Host	Rabbit
Uniprot ID	Q5T700

### Technical Details

Immunogen	Synthesized peptide derived from internal of human LDLRAD1.
Predicted Reactive Species	Chimpanzee, Drosophila, Macaque
Isotype	IgG
Form	Liquid
Concentration	1 mg/ml
Purification	The antibody was affinity-purified from rabbit antiserum by affinity-chromatography using epitope-specific immunogen.
Suggested Dilutions	Dilute the sample so that the expected range of concentrations fall within the detection range of this kit.

If the expected range of concentration is unknown, a pilot test should be conducted to decide the optimal dilution ratio for your samples.  
Some PubMed article(s) citing the expression level of this target are as follows:  
Boster Bio's internal QC testing used:  
Western blotting: 1:500~1:3000

## Anti-LDLRAD1 Antibody (A15115) Images



Western blot analysis of extracts from Jurkat cells and HepG2 cells, using LDLRAD1 antibody A15115.

## Submit a product review to Biocompare.com

Submit a review of this product to Biocompare.com to receive a \$20 Amazon.com giftcard! Your reviews help your fellow scientists make the right decisions. Thank you for your contribution.



Anti-LDLRAD1 Antibody