

Anti-TIGD3 Antibody

Catalog Number: A19473

About TIGD3

The protein encoded by this gene belongs to the tigger subfamily of the pogo superfamily of DNA-mediated transposons in humans. These proteins are related to DNA transposons found in fungi and nematodes, and more distantly to the Tc1 and mariner transposases. They are also very similar to the major mammalian centromere protein B. The exact function of this gene is not known.

The MGC Project Team, Genome Res. 14:2121-2127(2004).

Overview

| | |
|----------------------|--|
| Product Name | Anti-TIGD3 Antibody |
| Reactive Species | Human |
| Description | Boster Bio Anti-TIGD3 Antibody (Catalog # A19473). Tested in WB, IHC applications. This antibody reacts with Human. |
| Application | IHC, WB |
| Clonality | Polyclonal |
| Formulation | Rabbit IgG in phosphate buffered saline (without Mg ²⁺ and Ca ²⁺), pH 7.4, 150mM NaCl, 0.02% sodium azide and 50% glycerol. |
| Storage Instructions | Store at -20°C for one year. For short term storage and frequent use, store at 4°C for up to one month. Avoid repeated freeze-thaw cycles. |
| Host | Rabbit |
| Uniprot ID | Q6B0B8 |

Technical Details

| | |
|----------------------------|---|
| Immunogen | Synthesized peptide derived from C-terminal of human TIGD3. |
| Predicted Reactive Species | Chimpanzee, Drosophila, Macaque |
| Isotype | IgG |
| Form | Liquid |
| Concentration | 1 mg/ml |
| Purification | The antibody was affinity-purified from rabbit antiserum by affinity-chromatography using epitope-specific immunogen. |
| Suggested Dilutions | Dilute the sample so that the expected range of concentrations fall within the detection range of this |

kit.

If the expected range of concentration is unknown, a pilot test should be conducted to decide the optimal dilution ratio for your samples.

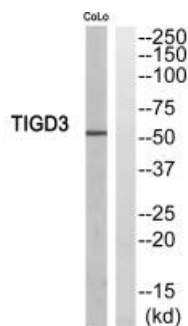
Some PubMed article(s) citing the expression level of this target are as follows:

Boster Bio's internal QC testing used:

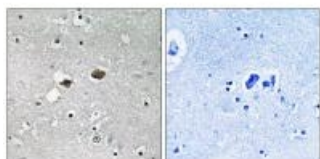
Western blotting: 1:500~1:3000

Immunohistochemistry: 1:50~1:100

Anti-TIGD3 Antibody (A19473) Images



Western blot analysis of extracts from COLO205 cells, using TIGD3 antibody A19473.



Immunohistochemistry analysis of paraffin-embedded human brain tissue, using TIGD3 antibody A19473.

Submit a product review to Biocompare.com

Submit a review of this product to Biocompare.com to receive a \$20 Amazon.com giftcard! Your reviews help your fellow scientists make the right decisions. Thank you for your contribution.



Anti-TIGD3 Antibody