

## Anti-MAP3KL4 MAP3K21 Antibody

Catalog Number: A30507

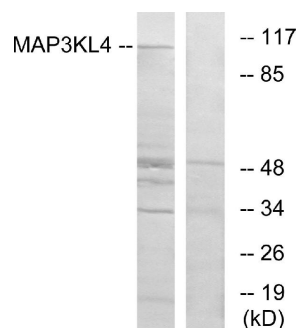
### Overview

Product Name	Anti-MAP3KL4 MAP3K21 Antibody
Reactive Species	Human, Mouse, Rat
Description	Boster Bio Anti-MAP3KL4 MAP3K21 Antibody (Catalog# A30507). Tested in WB, ELISA applications. This antibody reacts with Human, Rat, Mouse.
Application	ELISA, WB
Clonality	Polyclonal
Formulation	PBS containing 50% glycerol, 0.5% BSA and 0.02% sodium azide.
Storage Instructions	Store at -20°C for one year. For short-term storage and frequent use, store at 4°C for up to one month. Avoid repeated freeze-thaw cycles.
Host	Rabbit
Uniprot ID	Q5TCX8

### Technical Details

Immunogen	A peptide derived from human MAP3KL4. Immunogen sequence location: 631-680
Predicted Reactive Species	Bovine, Canine, Chicken, Primate, Sheep, Xenopus, Zebrafish
Isotype	Rabbit IgG
Form	Liquid
Concentration	0.5-1mg/ml, actual concentration vary by lot. Use suggested dilution ratio to decide dilution procedure.
Purification	The antibody was purified from rabbit antiserum by affinity-chromatography using immunogen.
Suggested Dilutions	<p>Dilute the sample so that the expected range of concentrations fall within the detection range of this kit.</p> <p>If the expected range of concentration is unknown, a pilot test should be conducted to decide the optimal dilution ratio for your samples.</p> <p>Some PubMed article(s) citing the expression level of this target are as follows:</p> <p>Boster Bio's internal QC testing used:</p> <p>Western Blot, 1:500 - 1:2000</p> <p>ELISA, 1:20000</p> <p>Not yet tested in other applications.</p>

## Anti-MAP3KL4 MAP3K21 Antibody (A30507) Images



Western blot analysis of lysates from HT-29 cells, using MAP3KL4 Antibody. The lane on the right is blocked with the synthesized peptide.

### Submit a product review to Biocompare.com

Submit a review of this product to Biocompare.com to receive a \$20 Amazon.com giftcard! Your reviews help your fellow scientists make the right decisions. Thank you for your contribution.



Anti-MAP3KL4 MAP3K21 Antibody