

Anti-HLAH Antibody

Catalog Number: A30720

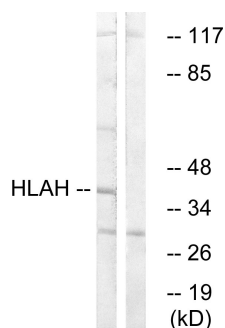
Overview

Product Name	Anti-HLAH Antibody
Reactive Species	Human
Description	Boster Bio Anti-HLAH Antibody catalog # A30720. Tested in WB applications. This antibody reacts with Human.
Application	WB
Clonality	Polyclonal
Formulation	Rabbit IgG in phosphate buffered saline (without Mg2+ and Ca2+), pH 7.4, 150mM NaCl, 0.02% sodium azide and 50% glycerol.
Storage Instructions	Store at -20°C for one year. For short term storage and frequent use, store at 4°C for up to one month. Avoid repeated freeze-thaw cycles.
Host	Rabbit
Uniprot ID	P01893

Technical Details

Immunogen	A peptide derived from human HLAH. Immunogen sequence location: 71-120
Predicted Reactive Species	Bovine, Canine, Chicken, Primate, Sheep, Xenopus, Zebrafish
Isotype	Rabbit IgG
Form	Liquid
Concentration	0.5-1mg/ml, actual concentration vary by lot. Use suggested dilution ratio to decide dilution procedure.
Purification	The antibody was purified from rabbit antiserum by affinity-chromatography using immunogen.
Suggested Dilutions	<p>Dilute the sample so that the expected range of concentrations fall within the detection range of this kit.</p> <p>If the expected range of concentration is unknown, a pilot test should be conducted to decide the optimal dilution ratio for your samples.</p> <p>Some PubMed article(s) citing the expression level of this target are as follows:</p> <p>Boster Bio's internal QC testing used:</p> <p>User need to optimize the dilution ratio for this antibody</p>

Anti-HLAH Antibody (A30720) Images



Western blot analysis of lysates from LOVO cells, using HLAH Antibody. The lane on the right is blocked with the synthesized peptide.

Submit a product review to Biocompare.com

Submit a review of this product to Biocompare.com to receive a \$20 Amazon.com giftcard! Your reviews help your fellow scientists make the right decisions. Thank you for your contribution.



Anti-HLAH Antibody