

Anti-PVRL1 Antibody

Catalog Number: A30778

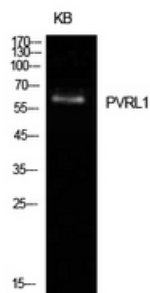
Overview

Product Name	Anti-PVRL1 Antibody
Reactive Species	Human, Mouse, Rat
Description	Boster Bio Anti-PVRL1 Antibody (Catalog# A30778). Tested in WB, ELISA applications. This antibody reacts with Human, Mouse, Rat.
Application	ELISA, WB
Clonality	Polyclonal
Formulation	PBS containing 50% glycerol, 0.5% BSA and 0.02% sodium azide.
Storage Instructions	Store at -20°C for one year. For short-term storage and frequent use, store at 4°C for up to one month. Avoid repeated freeze-thaw cycles.
Host	Rabbit
Uniprot ID	Q15223

Technical Details

Immunogen	A peptide derived from the Internal region of human PVRL1. Immunogen sequence location: 81 - 130
Predicted Reactive Species	Bovine, Canine, Chicken, Primate, Sheep, Xenopus, Zebrafish
Isotype	Rabbit IgG
Form	Liquid
Concentration	0.5-1mg/ml, actual concentration vary by lot. Use suggested dilution ratio to decide dilution procedure.
Purification	The antibody was affinity-purified from rabbit antiserum by affinity-chromatography using epitope-specific peptide.
Suggested Dilutions	<p>Dilute the sample so that the expected range of concentrations fall within the detection range of this kit.</p> <p>If the expected range of concentration is unknown, a pilot test should be conducted to decide the optimal dilution ratio for your samples.</p> <p>Some PubMed article(s) citing the expression level of this target are as follows:</p> <p>Boster Bio's internal QC testing used:</p> <p>Western Blot, 1:500 - 1:2000</p> <p>ELISA, 1:10000</p> <p>Not yet tested in other applications.</p>

Anti-PVRL1 Antibody (A30778) Images



Western Blot analysis of extracts from KB cells using PVRL1 Antibody.

Submit a product review to Biocompare.com

Submit a review of this product to Biocompare.com to receive a \$20 Amazon.com giftcard! Your reviews help your fellow scientists make the right decisions. Thank you for your contribution.



Anti-PVRL1 Antibody