

## Anti-HP1 alpha CBX5 Antibody ChIP Grade

Catalog Number: CI1057

### About CBX5

HP1 alpha is a component of heterochromatin. It recognizes and binds to histone H3 tails methylated at 'Lys-9', leading to epigenetic repression of transcription. HP1 alpha may also interact with lamin B receptor (LBR), thereby contributing to the association of the heterochromatin with the inner nuclear membrane. Further, HP1 alpha is involved in the formation of a functional kinetochore through interaction with MIS12 complex proteins.

### Overview

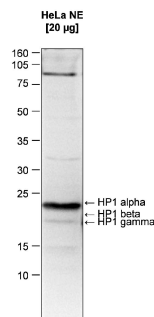
Product Name	Anti-HP1 alpha CBX5 Antibody ChIP Grade
Reactive Species	Human
Description	Boster Bio Anti-HP1 alpha CBX5 Antibody ChIP Grade catalog # CI1057. Tested in IF, IHC, WB applications. This antibody reacts with Human.
Application	IF, IHC, WB
Clonality	Polyclonal
Formulation	Protein G purified polyclonal antibody in PBS containing 0.05% azide and 0.05% ProClin 300.
Storage Instructions	Store at -20°C for one year. For short term storage and frequent use, store at 4°C for up to one month. Avoid repeated freeze-thaw cycles.
Host	Rabbit
Uniprot ID	P45973

### Technical Details

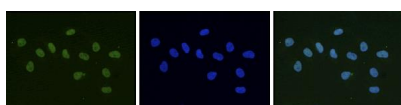
Immunogen	This antibody is raised in rabbit against human HP1 (Heterochromatin protein 1 homolog alpha), using the full length recombinant GST tagged protein.
Recommended Detection Systems	Boster recommends Enhanced Chemiluminescent Kit with anti-Rabbit IgG (EK1002) for Western blot.
Form	Liquid
Concentration	0.5-1mg/ml, actual concentration vary by lot. Use suggested dilution ratio to decide dilution procedure.
Purification	Protein G purified
Suggested Dilutions	Dilute the sample so that the expected range of concentrations fall within the detection range of this kit. If the expected range of concentration is unknown, a pilot test should be conducted to decide the

optimal dilution ratio for your samples.  
Some PubMed article(s) citing the expression level of this target are as follows:  
Boster Bio's internal QC testing used:  
User need to optimize the dilution ratio for this antibody

## Anti-HP1 alpha CBX5 Antibody ChIP Grade (CI1057) Images



Western blot analysis of HP1 alpha expression in nuclear extracts from HeLa cells (20 ug). HP1 alpha was detected using Anti-HP1 alpha polyclonal antibody (Catalog # CI1057) at 1/1000 dilution. The western blot analysis clearly demonstrates that the HP1 alpha antibody specifically recognizes HP1 alpha and not HP1 beta and HP1 gamma.



Immunofluorescence images stained on HeLa cells: (Left) Cells stained with anti-HP1 alpha polyclonal antibody (Catalog # CI1057) at 1/500 dilution. (Middle) Nuclei stained with DAPI. (Right) Merged images of two stains from the left and middle.

## Submit a product review to Biocompare.com

Submit a review of this product to Biocompare.com to receive a \$20 Amazon.com giftcard! Your reviews help your fellow scientists make the right decisions. Thank you for your contribution.



Anti-HP1 alpha CBX5 Antibody ChIP Grade