

Anti-Jarid1c KDM5C Antibody ChIP Grade

Catalog Number: CI1111

About KDM5C

Jarid1c is a histone demethylase which specifically demethylates lysine 4 of histone H3, thereby playing a central role in the regulation of transcription and chromatin remodelling. Jarid1c demethylates the trimethylated and dimethylated lysine 4, but not the monomethylated form. Further, Jarid1c participates in transcriptional repression of neuronal genes by recruiting histone deacetylases and REST at neuron-restrictive silencer elements. Mutations in the Jarid1c gene have been associated with X-linked mental retardation.

Overview

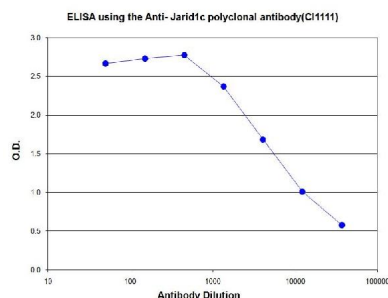
Product Name	Anti-Jarid1c KDM5C Antibody ChIP Grade
Reactive Species	Human, Mouse
Description	Boster Bio Anti-Jarid1c KDM5C Antibody ChIP Grade catalog # CI1111. Tested in WB applications. This antibody reacts with Human, Mouse.
Application	WB
Clonality	Polyclonal
Formulation	Whole antiserum from rabbit containing 0.05% azide.
Storage Instructions	Store at -20°C for one year. For short term storage and frequent use, store at 4°C for up to one month. Avoid repeated freeze-thaw cycles.
Host	Rabbit
Uniprot ID	P41229

Technical Details

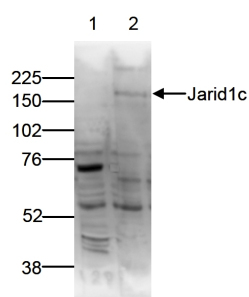
Immunogen	This antibody is raised in rabbit against mouse Jarid1c (jumonji, AT rich interactive domain 1C), using 3 KLH-conjugated synthetic peptides containing sequences from the inner part of the protein.
Recommended Detection Systems	Boster recommends Enhanced Chemiluminescent Kit with anti-Rabbit IgG (EK1002) for Western blot.
Form	Liquid
Concentration	0.5-1mg/ml, actual concentration vary by lot. Use suggested dilution ratio to decide dilution procedure.
Purification	Whole antiserum
Suggested Dilutions	Dilute the sample so that the expected range of concentrations fall within the detection range of this kit. If the expected range of concentration is unknown, a pilot test should be conducted to decide the

optimal dilution ratio for your samples.
Some PubMed article(s) citing the expression level of this target are as follows:
Boster Bio's internal QC testing used:
User need to optimize the dilution ratio for this antibody

Anti-Jarid1c KDM5C Antibody ChIP Grade (CI1111) Images



To determine the titer of the antibody, an ELISA was performed using a serial dilution of Anti-Jarid1c polyclonal antibody (Catalog # CI1111). The plates were coated with the peptides used for immunization of the rabbit. By plotting the absorbance against the antibody dilution, the titer of the antibody was estimated to be 1:7,000.



Western blot analysis of Jarid1c expression in nuclear extracts from HeLa cells (40

Submit a product review to Biocompare.com

Submit a review of this product to Biocompare.com to receive a \$20 Amazon.com giftcard! Your reviews help your fellow scientists make the right decisions. Thank you for your contribution.



Anti-Jarid1c KDM5C Antibody ChIP Grade