

## Anti-LYDG10 C19orf53 Antibody ChIP Grade

Catalog Number: CI1115

### About C19orf53

LYDG10 may have a potential role in hypercalcemia of malignancy.

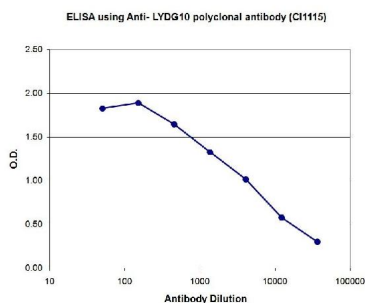
### Overview

Product Name	Anti-LYDG10 C19orf53 Antibody ChIP Grade
Reactive Species	Human
Description	Boster Bio Anti-LYDG10 C19orf53 Antibody ChIP Grade catalog # CI1115. Tested in ELISA applications. This antibody reacts with Human.
Application	ELISA
Clonality	Polyclonal
Formulation	Whole antiserum from rabbit containing 0.05% azide.
Storage Instructions	Store at -20°C for one year. For short term storage and frequent use, store at 4°C for up to one month. Avoid repeated freeze-thaw cycles.
Host	Rabbit
Uniprot ID	Q9UNZ5

### Technical Details

Immunogen	This antibody is raised in rabbit against human LYDG10 (leydig cell tumor 10 kDa protein homolog) using two KLH-conjugated synthetic peptides containing a sequence from the N-terminal and the central region of the protein, respectively.
Form	Liquid
Concentration	0.5-1mg/ml, actual concentration vary by lot. Use suggested dilution ratio to decide dilution procedure.
Purification	Whole antiserum
Suggested Dilutions	Dilute the sample so that the expected range of concentrations fall within the detection range of this kit. If the expected range of concentration is unknown, a pilot test should be conducted to decide the optimal dilution ratio for your samples. Some PubMed article(s) citing the expression level of this target are as follows:

## Anti-LYDG10 C19orf53 Antibody ChIP Grade (CI1115) Images



To determine the titer of the antibody, an ELISA was performed using a serial dilution of LYDG10 polyclonal antibody (Catalog # CI1115). The plates were coated with the peptides used for immunization of the rabbit. By plotting the absorbance against the antibody dilution, the titer of the antibody was estimated to be 1:4,300.

## Submit a product review to Biocompare.com

Submit a review of this product to Biocompare.com to receive a \$20 Amazon.com giftcard! Your reviews help your fellow scientists make the right decisions. Thank you for your contribution.



Anti-LYDG10 C19orf53 Antibody ChIP Grade