

## Anti-BMI1 Antibody ChIP Grade

Catalog Number: CI1117

### About BMI1

BMI1 is a component of a Polycomb group (PcG) multiprotein PRC1-like complex, a complex class required to maintain the transcriptionally repressive state of many genes, including Hox genes, throughout development. The PcG PRC1 complex acts via chromatin remodeling and modification of histones; it mediates monoubiquitination of lysine 119 on histone H2A, rendering chromatin heritably changed in its expressibility. BMI1 is required to stimulate the E3 ubiquitin-protein ligase activity of RNF2/RING2 in the PRC1 complex.

### Overview

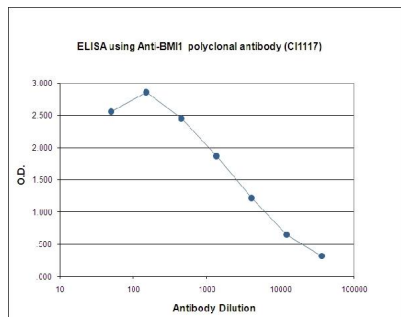
Product Name	Anti-BMI1 Antibody ChIP Grade
Reactive Species	Mouse
Description	Boster Bio Anti-BMI1 Antibody ChIP Grade catalog # CI1117. Tested in ELISA applications. This antibody reacts with Mouse.
Application	ELISA
Clonality	Polyclonal
Formulation	Whole antiserum from rabbit containing 0.05% azide.
Storage Instructions	Store at -20°C for one year. For short term storage and frequent use, store at 4°C for up to one month. Avoid repeated freeze-thaw cycles.
Host	Rabbit
Uniprot ID	P35226

### Technical Details

Immunogen	This antibody is raised in rabbit against mouse BMI1 (BMI1 polycomb ring finger oncogene) using two KLH-conjugated synthetic peptides containing a sequence from the central and the C-terminal region of the protein, respectively.
Form	Liquid
Concentration	0.5-1mg/ml, actual concentration vary by lot. Use suggested dilution ratio to decide dilution procedure.
Purification	Whole antiserum
Suggested Dilutions	Dilute the sample so that the expected range of concentrations fall within the detection range of this kit. If the expected range of concentration is unknown, a pilot test should be conducted to decide the optimal dilution ratio for your samples. Some PubMed article(s) citing the expression level of this target are as follows:



## Anti-BMI1 Antibody ChIP Grade (CI1117) Images



To determine the titer of the antibody, an ELISA was performed using a serial dilution of Anti-BMI1 polyclonal antibody (Catalog # CI1117). The plates were coated with the peptides used for immunization of the rabbit. By plotting the absorbance against the antibody dilution, the titer of the antibody was estimated to be 1:3,100.

## Submit a product review to Biocompare.com

Submit a review of this product to Biocompare.com to receive a \$20 Amazon.com giftcard! Your reviews help your fellow scientists make the right decisions. Thank you for your contribution.



Anti-BMI1 Antibody ChIP Grade