

Anti-YY1 Antibody ChIP Grade

Catalog Number: CI1118

About YY1

YY1 is a multifunctional transcription factor that exhibits positive and negative control on a large number of cellular and viral genes by binding to sites overlapping the transcription start site. The consensus sequence is 5'-CCGGCATNTT-3', although some genes have been shown to contain a longer binding motif allowing enhanced binding. The initial CG dinucleotide can be methylated greatly reducing the binding affinity. The effect on transcription regulation is depending upon the context in which YY1 binds and diverse mechanisms of action include direct activation or repression, indirect activation or repression via cofactor recruitment, or activation or repression by disruption of binding sites or conformational DNA changes. Its activity is regulated by transcription factors and cytoplasmic proteins that have been shown to abrogate or completely inhibit YY1-mediated activation or repression. YY1 may play an important role in development and differentiation.

Overview

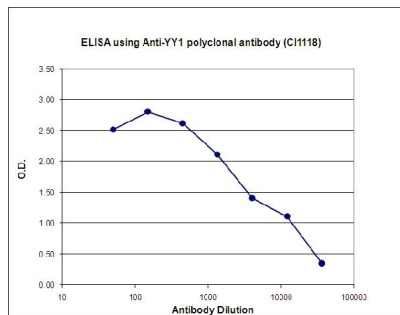
Product Name	Anti-YY1 Antibody ChIP Grade
Reactive Species	Human, Mouse
Description	Boster Bio Anti-YY1 Antibody ChIP Grade catalog # CI1118. Tested in ELISA applications. This antibody reacts with Human, Mouse.
Application	ELISA
Clonality	Polyclonal
Formulation	Whole antiserum from rabbit containing 0.05% azide.
Storage Instructions	Store at -20°C for one year. For short term storage and frequent use, store at 4°C for up to one month. Avoid repeated freeze-thaw cycles.
Host	Rabbit
Uniprot ID	P25490

Technical Details

Immunogen	This antibody is raised in rabbit against human YY1 (YY1 transcription factor) using two KLH-conjugated synthetic peptides containing a sequence from the central region of the protein.
Form	Liquid
Concentration	0.5-1mg/ml, actual concentration vary by lot. Use suggested dilution ratio to decide dilution procedure.
Purification	Whole antiserum
Suggested Dilutions	Dilute the sample so that the expected range of concentrations fall within the detection range of this kit.

If the expected range of concentration is unknown, a pilot test should be conducted to decide the optimal dilution ratio for your samples.
Some PubMed article(s) citing the expression level of this target are as follows:

Anti-YY1 Antibody ChIP Grade (CI1118) Images



To determine the titer of the antibody, an ELISA was performed using a serial dilution of Anti-YY1 polyclonal antibody (Catalog # CI1118). The plates were coated with the peptides used for immunization of the rabbit. By plotting the absorbance against the antibody dilution, the titer of the antibody was estimated to be 1:4,800.

Submit a product review to Biocompare.com

Submit a review of this product to Biocompare.com to receive a \$20 Amazon.com giftcard! Your reviews help your fellow scientists make the right decisions. Thank you for your contribution.



Anti-YY1 Antibody ChIP Grade