

Anti-PIWIL1/Hiwi Antibody ChIP Grade

Catalog Number: CI1120

About PIWIL1

PIWIL1 plays a central role during spermatogenesis by repressing transposable elements and preventing their mobilization, which is essential for the germline integrity. PIWIL1 acts via the piRNA metabolic process, which mediates the repression of transposable elements during meiosis by forming complexes composed of piRNAs and Piwi proteins and govern the methylation and subsequent repression of transposons. It directly binds methylated piRNAs, a class of 24 to 30 nucleotide RNAs that are generated by a Dicer-independent mechanism and are primarily derived from transposons and other repeated sequence elements. Besides their function in transposable elements repression, piRNAs are probably involved in other processes during meiosis such as translation regulation. PIWIL1 probably is a component of some RISC complex, which mediates RNA cleavage and translational silencing. It also plays a role in the formation of chromatoid bodies and is required for some miRNAs stability.

Overview

Product Name	Anti-PIWIL1/Hiwi Antibody ChIP Grade
Reactive Species	Human
Description	Boster Bio Anti-PIWIL1/Hiwi Antibody ChIP Grade catalog # CI1120. Tested in ELISA applications. This antibody reacts with Human.
Application	ELISA
Clonality	Polyclonal
Formulation	Whole antiserum from rabbit containing 0.05% azide.
Storage Instructions	Store at -20°C for one year. For short term storage and frequent use, store at 4°C for up to one month. Avoid repeated freeze-thaw cycles.
Host	Rabbit
Uniprot ID	Q96J94

Technical Details

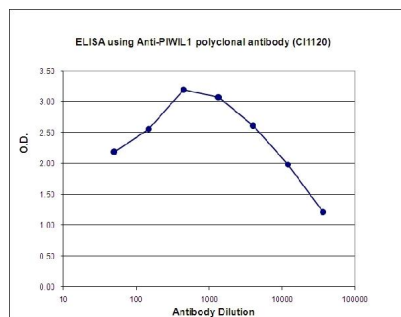
Immunogen	This antibody is raised in rabbit against human PIWIL1 (piwi-like 1) using two KLH-conjugated synthetic peptides containing a sequence from the N-terminal and the central region of the protein, respectively.
Form	Liquid
Concentration	0.5-1mg/ml, actual concentration vary by lot. Use suggested dilution ratio to decide dilution procedure.
Purification	Whole antiserum
Suggested Dilutions	Dilute the sample so that the expected range of concentrations fall within the detection range of this

kit.

If the expected range of concentration is unknown, a pilot test should be conducted to decide the optimal dilution ratio for your samples.

Some PubMed article(s) citing the expression level of this target are as follows:

Anti-PIWIL1/Hiwi Antibody ChIP Grade (CI1120) Images



To determine the titer of the antibody, an ELISA was performed using a serial dilution of Anti-PIWIL1 polyclonal antibody (Catalog # CI1120). The plates were coated with the peptides used for immunization of the rabbit. By plotting the absorbance against the antibody dilution, the titer of the antibody was estimated to be 1:23,800.

Submit a product review to Biocompare.com

Submit a review of this product to Biocompare.com to receive a \$20 Amazon.com giftcard! Your reviews help your fellow scientists make the right decisions. Thank you for your contribution.



Anti-PIWIL1/Hiwi Antibody ChIP Grade