

## Anti-PML Antibody ChIP Grade

Catalog Number: CI1128

### About PML

PML is a transcription factor and tumor suppressor which belongs to the tripartite motif (TRIM) family. This motif contains three zinc-binding domains, a RING, a B-box type 1 and a B-box type 2, and a coiled-coil region. PML regulates the response of p53 to oncogenic signals. It is often involved in a chromosomal translocation between chromosomes 15 and 17 which results in a PML/RAR $\alpha$  fusion protein and is associated with most cases of acute promyelocytic leukemia.

### Overview

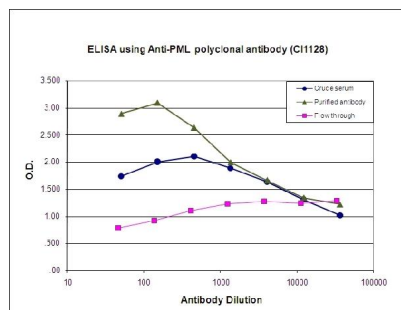
Product Name	Anti-PML Antibody ChIP Grade
Reactive Species	Human
Description	Boster Bio Anti-PML Antibody ChIP Grade catalog # CI1128. Tested in Flow Cytometry, WB applications. This antibody reacts with Human.
Application	Flow Cytometry, WB
Clonality	Polyclonal
Formulation	Affinity purified polyclonal antibody in PBS containing 0.05% azide and 0.05% ProClin 300.
Storage Instructions	Store at -20°C for one year. For short term storage and frequent use, store at 4°C for up to one month. Avoid repeated freeze-thaw cycles.
Host	Rabbit
Uniprot ID	P29590

### Technical Details

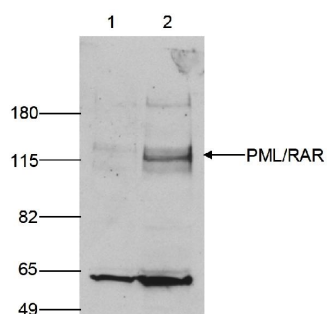
Immunogen	This antibody is raised in rabbit against human PML (Promyelocytic leukemia), using 3 different KLH-conjugated synthetic peptides.
Recommended Detection Systems	Boster recommends Enhanced Chemiluminescent Kit with anti-Rabbit IgG (EK1002) for Western blot.
Form	Liquid
Concentration	0.5-1mg/ml, actual concentration vary by lot. Use suggested dilution ratio to decide dilution procedure.
Purification	Affinity purified
Suggested Dilutions	Dilute the sample so that the expected range of concentrations fall within the detection range of this kit. If the expected range of concentration is unknown, a pilot test should be conducted to decide the

optimal dilution ratio for your samples.  
Some PubMed article(s) citing the expression level of this target are as follows:  
Boster Bio's internal QC testing used:  
User need to optimize the dilution ratio for this antibody

## Anti-PML Antibody ChIP Grade (CI1128) Images



To determine the titer of the antibody, an ELISA was performed using a serial dilution of Anti-PML polyclonal antibody (Catalog # CI1128), crude serum and Flow Through in antigen coated wells. By plotting the absorbance against the antibody dilution, the titer of the antibody was estimated to be 1:6,000.



Western blot analysis of PML expression in nuclear extracts from control (50)

## Submit a product review to Biocompare.com

Submit a review of this product to Biocompare.com to receive a \$20 Amazon.com giftcard! Your reviews help your fellow scientists make the right decisions. Thank you for your contribution.



Anti-PML Antibody ChIP Grade