

## Anti-TET2 Antibody ChIP Grade (Monoclonal)

Catalog Number: CI1144

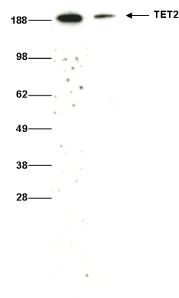
### Overview

Product Name	Anti-TET2 Antibody ChIP Grade (Monoclonal)
Reactive Species	Human, Mouse
Description	Boster Bio Anti-TET2 Antibody ChIP Grade (Monoclonal) catalog # CI1144. Tested in IP, IHC, WB applications. This antibody reacts with Human, Mouse.
Application	IP, IHC, WB
Clonality	Monoclonal
Formulation	Protein G purified polyclonal antibody in PBS containing 0.05% azide.
Storage Instructions	Store at -20°C for one year. For short term storage and frequent use, store at 4°C for up to one month. Avoid repeated freeze-thaw cycles.
Host	Mouse
Uniprot ID	Q6N021

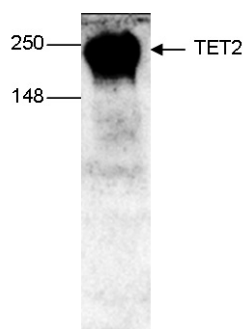
### Technical Details

Immunogen	This antibody is raised in mouse against a recombinant protein containing the N-terminal 300 amino acids of human TET2 (tet oncogene family member 2).
Recommended Detection Systems	Boster recommends Enhanced Chemiluminescent Kit with anti-Mouse IgG (EK1001) for Western blot.
Form	Liquid
Concentration	0.5-1mg/ml, actual concentration vary by lot. Use suggested dilution ratio to decide dilution procedure.
Purification	Protein G purified
Suggested Dilutions	<p>Dilute the sample so that the expected range of concentrations fall within the detection range of this kit.</p> <p>If the expected range of concentration is unknown, a pilot test should be conducted to decide the optimal dilution ratio for your samples.</p> <p>Some PubMed article(s) citing the expression level of this target are as follows:</p> <p>Boster Bio's internal QC testing used:</p> <p>User need to optimize the dilution ratio for this antibody</p>

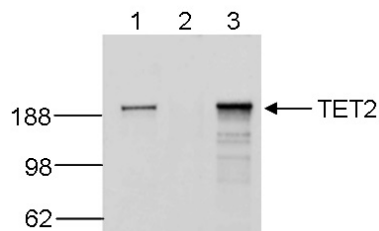
## Anti-TET2 Antibody ChIP Grade (Monoclonal) (CI1144) Images



Western blot analysis of TET2 expression in whole cell extracts from HL60 cells (40 ug). TET2 at 188KD was detected using Anti-TET2 monoclonal antibody (Catalog # CI1144) at 1/1000 dilution (lane 1) or at 1/2000 dilution (lane 2).



Western blot analysis of TET2 expression in mouse E14 ES cells. TET2 at 250KD was detected using Anti-TET2 monoclonal antibody (Catalog # CI1144) at 1/1000 dilution.



TET2 was immunoprecipitated from 250 ug HL60 RIPA cell lysate. Lane 1: 25 ug RIPA lysate (positive control)

**Submit a product review to Biocompare.com**

Submit a review of this product to Biocompare.com to receive a \$20 Amazon.com giftcard! Your reviews help your fellow scientists make the right decisions. Thank you for your contribution.



Anti-TET2 Antibody ChIP Grade (Monoclonal)