

Anti-human CD11b Itgam Monoclonal Antibody Biotin Conjugated, Flow Validated

Catalog Number: FC00144-Biotin

Introduction

CD11b is a 165-kDa adhesion glycoprotein that associates with the 95-kDa integrin beta2 (CD18) to form the CD11b/CD18 complex, also known as Mac-1 or CR3. CD11b is expressed on activated lymphocytes, monocytes, granulocytes, and a subset of NK cells. CD11b functions in cell-cell and cell-substrate interactions and is a receptor for iC3b, CD54 (ICAM-1), CD102 (ICAM-2) and CD50 (ICAM-3). The OKM1 antibody directed against the CD11b antigen on human monocytes and granulocytes.

This antibody is routinely tested by flow cytometric analysis. Flow cytometry and other applications were tested during antibody development by CapricBio or are reported in the literature.

Application Information

Each lot of this antibody has been quality control tested by flow cytometric analysis of human PBMCs. For flow cytometric staining, the recommended dose of this antibody is 0.5ug per 1x10⁶ cells in 100ul of staining volume followed by any fluorochrome conjugated streptavidin. It is strongly suggested that the antibody reactivity be empirically titrated for optimal performance in the application of interest.

About Itgam

ITGAM (Integrin Alpha-M), also called CD11B or Mo1 ALPHA SUBUNIT (MO1A), is one protein subunit that forms the heterodimeric integrin alpha-M beta-2 (alphaMbeta2) molecule. A major surface antigen family on human leukocytes includes complement receptor type 3 (CR3A; also called ITGAM, Mac1, or Mo1), lymphocyte function-associated (LFA) antigen type 1 (ITGAL), and p150, 95 (ITGAX). By in situ hybridization, Corbi et al. (1988) demonstrated that the genes encoding the alpha subunits of LFA1 (ITGAL), Mac1, and p150, 95 (ITGAX), all of which are involved in leukocyte adhesion, constitute a cluster on 16p13.1-p11. Callen et al. (1991) narrowed the assignment to 16p11.2. Inflammation plays an essential role in the initiation and progression of atherosclerosis. Simon et al. (2000) presented evidence that it also has a role in vascular repair after mechanical arterial injury (i.e., percutaneous transluminal coronary angioplasty, or PTCA).

Overview

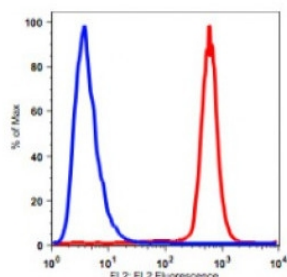
Product Name	Anti-human CD11b Itgam Monoclonal Antibody Biotin Conjugated, Flow Validated
Reactive Species	Human
Description	Boster Bio Anti-human CD11b Itgam Monoclonal Antibody Biotin Conjugated, Flow Validated catalog # FC00144-Biotin. Tested in Flow Cytometry applications. This antibody reacts with Human.
Conjugate	Biotin
Application	Flow Cytometry
Clonality	Monoclonal OKM1
Formulation	PBS, pH7.2, 0.09% NaN ₃

Storage Instructions	Store at 4°C for one year. Do not freeze.
Host	Mouse
Uniprot ID	P05555

Technical Details

Immunogen	Human PBMC
Predicted Reactive Species	Bovine, Canine, Chicken, Primate, Sheep, Xenopus, Zebrafish
Recommended Detection Systems	Boster recommends Enhanced Chemiluminescent Kit with anti-Rabbit IgG (EK1002) for Western blot, and HRP Conjugated anti-Rabbit IgG Super Vision Assay Kit (SV0002-1) for IHC(P).
Cross Reactivity	No cross reactivity with other proteins.
Isotype	IgG2b,k
Form	Liquid
Concentration	0.5-1mg/ml, actual concentration vary by lot. Use suggested dilution ratio to decide dilution procedure.
Purification	Protein A purified
Suggested Dilutions	<p>Dilute the sample so that the expected range of concentrations fall within the detection range of this kit.</p> <p>If the expected range of concentration is unknown, a pilot test should be conducted to decide the optimal dilution ratio for your samples.</p> <p>Some PubMed article(s) citing the expression level of this target are as follows:</p> <p>Boster Bio's internal QC testing used:</p> <p>User needs to optimize the dilution ratio for this antibody.</p>

Anti-human CD11b Itgam Monoclonal Antibody Biotin Conjugated, Flow Validated (FC00144-Biotin) Images



PBMCs monocyte gated populations stained with biotin conjugated anti-human CD11b (clone OKM1) followed by PE conjugated streptavidin (red histogram). PBMCs monocytes stained with biotin conjugated mouse IgG2b isotype control followed by SA-PE (Blue histogram).

Submit a product review to Biocompare.com

Submit a review of this product to Biocompare.com to receive a \$20 Amazon.com giftcard! Your reviews help your fellow scientists make the right decisions. Thank you for your contribution.



Anti-human CD11b Itgam Monoclonal Antibody Biotin Conjugated, Flow Validated