

Anti-human CD25 IL2RA Monoclonal Antibody Biotin Conjugated, Flow Validated

Catalog Number: FC00214-Biotin

Introduction

The antibody specifically binds to the 55 kDa type I transmembrane glycoprotein known as the low-affinity interleukin-2 receptor alpha chain subunit (IL2Ralpha, CD25). CD25 is expressed on regulatory T cells and on activated lymphocytes (T and B) and monocytes. CD25 expression on T and B lymphocytes is upregulated by antigenic or mitogenic stimulation.

This antibody is routinely tested by flow cytometric analysis. Flow cytometry and other applications were tested during antibody development by CapricoBio or are reported in the literature.

Application Information

Each lot of this antibody has been quality control tested by flow cytometric analysis of human PBMCs. For flow cytometric staining, the recommended use of this biotin-conjugated antibody is 0.5ug per 1x10⁶ cells in 100ul of staining volume followed by staining with any fluorescent conjugated streptavidin. However, it is strongly suggested that the antibody reactivity be empirically titrated for optimal performance in the application of interest.

About IL2RA

CD25 is the alpha chain of the IL-2 receptor. It is a type I transmembrane protein present on activated T cells, activated B cells, some thymocytes, myeloid precursors, and oligodendrocytes that associates with CD122 to form a heterodimer that can act as a high-affinity receptor for IL-2. The IL2R gene was mapped to 10p15-p14. CD25 is expressed in most B-cell neoplasms, some acute nonlymphocytic leukemias, neuroblastomas, and tumor infiltrating lymphocytes. Its soluble form, called sIL-2R may be elevated in these diseases and is occasionally used to track disease progression.

Overview

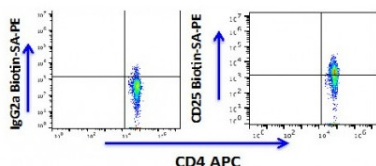
Product Name	Anti-human CD25 IL2RA Monoclonal Antibody Biotin Conjugated, Flow Validated
Reactive Species	Human
Description	Boster Bio Anti-human CD25 IL2RA Monoclonal Antibody Biotin Conjugated, Flow Validated (Catalog# FC00214-Biotin). Tested in Flow Cytometry application(s). This antibody reacts with Human.
Conjugate	Biotin
Application	Flow Cytometry
Clonality	Monoclonal Clone: 7G7B6
Formulation	PBS pH 7.2, 0.09% sodium azide
Storage Instructions	Store at 2-8°C. Avoid repeated freeze-thaw cycles.

Host	Mouse
Uniprot ID	P01589

Technical Details

Immunogen	Influenza virus stimulated human peripheral blood mononuclear cells
Isotype	IgG2a,k
Form	Liquid
Concentration	0.5-1mg/ml, actual concentration vary by lot. Use suggested dilution ratio to decide dilution procedure.
Purification	Protein A purified
Suggested Dilutions	<p>Dilute the sample so that the expected range of concentrations fall within the detection range of this kit.</p> <p>If the expected range of concentration is unknown, a pilot test should be conducted to decide the optimal dilution ratio for your samples.</p> <p>Some PubMed article(s) citing the expression level of this target are as follows:</p> <p>Boster Bio's internal QC testing used:</p> <p>User needs to optimize the dilution ratio for this antibody.</p>

Anti-human CD25 IL2RA Monoclonal Antibody Biotin Conjugated, Flow Validated (FC00214-Biotin) Images



Lymphocytes gated PBMCs stained with biotin conjugated anti-human CD25 (clone 7G7B6) along with CD4 APC followed by streptavidin PE (right panel). Lymphocytes gated PBMCs stained with mouse IgG2a biotin (clone RPC5.4) along with CD4 APC followed by streptavidin PE (left panel).

Submit a product review to Biocompare.com

Submit a review of this product to Biocompare.com to receive a \$20 Amazon.com giftcard! Your reviews help your fellow scientists make the right decisions. Thank you for your contribution.



Anti-human CD25 IL2RA Monoclonal Antibody Biotin Conjugated, Flow Validated