

Anti-Human CD62L Sell Monoclonal Antibody PE-Cy7 Conjugated, Flow Validated

Catalog Number: FC00652-PE-Cy7

Introduction

The L243 antibody reacts with human HLA-DR antigen which is expressed on B lymphocytes, monocytes, macrophages, activated T lymphocytes, activated natural killer (NK) lymphocytes, and human progenitor cells. HLADR is also present on thymic epithelium, B lymphocyte dependent areas of spleen and lymph node, and B cell lymphomas.

This antibody is routinely tested by flow cytometric analysis. Flow cytometry and other applications were tested during antibody development by CapricoBio or are reported in the literature.

Application Information

Each lot of this antibody has been pre-titrated and tested by flow cytometric analysis of human PBMCs such that 5ul of this product is sufficient for staining of 1 million cells in a 100ul staining volume or 100ul of whole blood. It is recommended that antibody reactivity be empirically titrated for optimal performance in the application of interest.

About Sell

HLA-DR is a heterodimeric cell surface glycoprotein comprised of a 36 kD alpha (heavy) chain and a 27 kD beta (light) chain. It is expressed on B cells, activated T cells, monocytes/macrophages, dendritic cells, and other non-professional APCs. In conjunction with the CD3/TCR complex and CD4 molecules, HLA-DR is critical for efficient peptide presentation to CD4+ T cells.

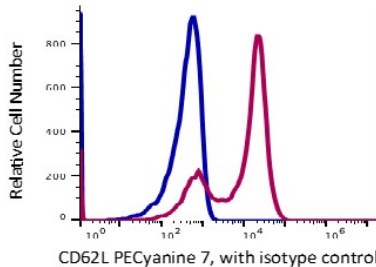
Overview

| | |
|----------------------|---|
| Product Name | Anti-Human CD62L Sell Monoclonal Antibody PE-Cy7 Conjugated, Flow Validated |
| Reactive Species | Human, Baboon |
| Description | Boster Bio Anti-Human CD62L Sell Monoclonal Antibody PE-Cy7 Conjugated, Flow Validated (Catalog# FC00652-PE-Cy7). Tested in Flow Cytometry application(s). This antibody reacts with Human, Baboon. |
| Conjugate | PE-Cy7 |
| Application | Flow Cytometry |
| Clonality | Monoclonal Clone: DREG56 |
| Formulation | PBS pH 7.2, 0.2% (w/v) BSA, 0.09% (w/v) sodium azide |
| Storage Instructions | Store at 2-8°C. Avoid repeated freeze-thaw cycles. |
| Host | Mouse |
| Uniprot ID | P14151 |

Technical Details

| | |
|----------------------------|---|
| Immunogen | PMA-activated human peripheral blood leukocytes |
| Predicted Reactive Species | Bovine, Canine |
| Isotype | IgG1,k |
| Form | Liquid, in PBS, pH7.2, <0.09% NaN3 and 0.2% (w/v) BSA |
| Concentration | 0.5-1mg/ml, actual concentration vary by lot. Use suggested dilution ratio to decide dilution procedure. |
| Purification | Affinity column chromatography |
| Suggested Dilutions | <p>Dilute the sample so that the expected range of concentrations fall within the detection range of this kit.</p> <p>If the expected range of concentration is unknown, a pilot test should be conducted to decide the optimal dilution ratio for your samples.</p> <p>Some PubMed article(s) citing the expression level of this target are as follows:</p> <p>Boster Bio's internal QC testing used:</p> <p>User needs to optimize the dilution ratio for this antibody.</p> |

Anti-Human CD62L Sell Monoclonal Antibody PE-Cy7 Conjugated, Flow Validated (FC00652-PE-Cy7) Images



Lymphocytes gated RBC lysed whole blood stained with PE-Cyanine7 conjugated anti-human CD62L (clone DREG56) (red histogram). Lymphocytes gated RBC lysed whole blood stained with mouse IgG1 (clone MOPC-31) sotype control (blue histogram). The data is generated by BD Accuri C6 Flow Cytometer and analyzed by FlowJo software.

1 Publications Citing This Product

1. PubMed ID: 25822027, HIV-1 Nef and Vpu Interfere with L-Selectin (CD62L) Cell Surface Expression To Inhibit Adhesion and Signaling in Infected CD4+ T Lymphocytes

Visit bosterbio.com/anti-human-cd62l-monoclonal-antibody-pe-cy7-conjugated-flow-validated-fc00652-pe-cy7-boster.html to see all 1 publications.

Submit a product review to Biocompare.com

Submit a review of this product to Biocompare.com to receive a \$20 Amazon.com giftcard! Your reviews help your fellow scientists make the right decisions. Thank you for your contribution.



Anti-Human CD62L Sell Monoclonal Antibody PE-Cy7 Conjugated, Flow Validated