

Anti-human CD62L SELL Monoclonal Antibody PE Conjugated, Flow Validated

Catalog Number: FC00652-PE

Introduction

The antibody reacts with a 76-95 kDa glycoprotein referred to as L-selectin (CD62L, LECAM, LAM-1, Leu8). As a human lymphocyte homing receptor for peripheral lymph node high endothelial venules (HEV), CD62L is expressed on neutrophils, monocytes, T- and B-lymphocyte subsets and NK cells.

This antibody is routinely tested by flow cytometric analysis. Flow cytometry and other applications were tested during antibody development by CapricoBio or are reported in the literature.

Application Information

Each lot of this antibody has been pre-titrated and tested by flow cytometric analysis of human PBMCs such that 5ul of this product is sufficient for staining 1 million cells in 100ul staining volume or 100ul whole blood. It is recommended that antibody reactivity be empirically titrated for optimal performance in the application of interest.

About SELL

L-selectin, also known as CD62L, is a cell adhesion molecule found on leukocytes. It belongs to the selectin family of proteins, which recognize sialylated carbohydrate groups. It is cleaved by ADAM17. SELL (L-selectin) is a cell surface component that is a member of a family of adhesion/homing receptors which play important roles in leukocyte-endothelial cell interactions. The molecule is composed of multiple domains: one homologous to lectins, one to epidermal growth factor, and two to the consensus repeat units found in C3/C4 binding proteins. L-selectin acts as a "homing receptor" for leukocytes to enter secondary lymphoid tissues via high endothelial venules. Ligands present on endothelial cells will bind to leukocyte expressing L-selectin, slowing leukocyte trafficking through the blood, and facilitating entry into a secondary lymphoid organ at that point.

Overview

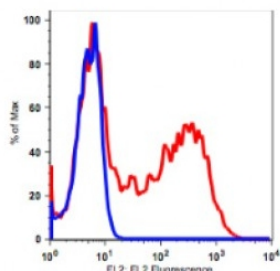
Product Name	Anti-human CD62L SELL Monoclonal Antibody PE Conjugated, Flow Validated
Reactive Species	Human, Baboon
Description	Boster Bio Anti-human CD62L SELL Monoclonal Antibody PE Conjugated, Flow Validated (Catalog# FC00652-PE). Tested in Flow Cytometry application(s). This antibody reacts with Human, Baboon.
Conjugate	PE
Application	Flow Cytometry
Clonality	Monoclonal Clone: DREG56
Formulation	PBS pH 7.2, 0.2% (w/v) BSA, 0.09% (w/v) sodium azide
Storage Instructions	Store at 2-8°C. Avoid repeated freeze-thaw cycles.

Host	Mouse
Uniprot ID	P14151

Technical Details

Immunogen	PMA-activated human peripheral blood leukocytes
Predicted Reactive Species	Bovine, Canine
Isotype	IgG1,k
Form	Liquid
Concentration	0.5-1mg/ml, actual concentration vary by lot. Use suggested dilution ratio to decide dilution procedure.
Purification	Protein A purified
Suggested Dilutions	<p>Dilute the sample so that the expected range of concentrations fall within the detection range of this kit.</p> <p>If the expected range of concentration is unknown, a pilot test should be conducted to decide the optimal dilution ratio for your samples.</p> <p>Some PubMed article(s) citing the expression level of this target are as follows:</p> <p>Boster Bio's internal QC testing used:</p> <p>User needs to optimize the dilution ratio for this antibody.</p>

Anti-human CD62L SELL Monoclonal Antibody PE Conjugated, Flow Validated (FC00652-PE) Images



PBMCs stained with anti-human clone DREG56 CD62L PE (red histogram). PBMCs stained with isotype control IgG1 MOPC-31 PE (blue histogram).

1 Publications Citing This Product

1. PubMed ID: 25822027, HIV-1 Nef and Vpu Interfere with L-Selectin (CD62L) Cell Surface Expression To Inhibit Adhesion and Signaling in Infected CD4+ T Lymphocytes

Visit bosterbio.com/anti-human-cd62l-pe-conjugated-flow-validated-fc00652-pe-boster.html to see all 1 publications.

Submit a product review to Biocompare.com

Submit a review of this product to Biocompare.com to receive a \$20 Amazon.com giftcard! Your reviews help your fellow scientists make the right decisions. Thank you for your contribution.



Anti-human CD62L SELL Monoclonal Antibody PE Conjugated, Flow Validated