

Anti-human CD33/Siglec 3 Monoclonal Antibody Biotin Conjugated, Flow Validated

Catalog Number: FC01508-Biotin

Introduction

The clone WM53 selectively binds with a 67kDa glycoprotein, known as CD33 having sialic acid-binding immunoglobulin-like lectin. It belongs to the ITIM (immuno-receptor tyrosine-based inhibitory motif) containing molecules able of recruiting protein tyrosine phosphatases. CD33 is expressed on myeloid progenitors, monocytes, granulocytes, dendritic cells and mast cells. It is absent on platelets, lymphocytes, erythrocytes and hematopoietic stem cells.

This antibody is routinely tested by flow cytometric analysis. Flow cytometry and other applications were tested during antibody development by CapricoBio or are reported in the literature.

Application Information

Each lot of this antibody has been quality control tested by flow cytometric analysis of human PBMCs. For flow cytometric staining, the recommended use of this antibody is 0.5ug per 1x10⁶ cells in 100ul of staining volume followed by a florescent conjugated Streptavidin. However, it is strongly suggested that the antibody reactivity be empirically titrated for optimal performance in the application of interest.

About CD33

CD33, also known as Siglec-3 (sialic acid binding Ig-like lectin 3, SIGLEC3, SIGLEC-3, gp67, p67), is a transmembrane receptor expressed on cells of myeloid lineage. It is usually considered myeloid-specific, but it can also be found on some lymphoid cells. CD33 binds sialic acids, therefore is a member of the SIGLEC family of lectins. By fluorescence in situ hybridization, CD33 is mapped to 19q13.3-q13.4.

Overview

Product Name	Anti-human CD33/Siglec 3 Monoclonal Antibody Biotin Conjugated, Flow Validated
Reactive Species	Human
Description	Boster Bio Anti-human CD33/Siglec 3 Monoclonal Antibody Biotin Conjugated, Flow Validated (Catalog# FC01508-Biotin). Tested in Flow Cytometry application(s). This antibody reacts with Human.
Conjugate	Biotin
Application	Flow Cytometry
Clonality	Monoclonal Clone: WM53
Formulation	PBS pH 7.2, 0.09% sodium azide
Storage Instructions	Store at 2-8°C. Avoid repeated freeze-thaw cycles.
Host	Mouse

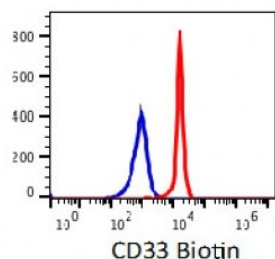
Uniprot ID

P20138

Technical Details

Immunogen	Human AML cells
Isotype	IgG1,k
Form	Liquid
Concentration	0.5-1mg/ml, actual concentration vary by lot. Use suggested dilution ratio to decide dilution procedure.
Purification	Protein A purified
Suggested Dilutions	<p>Dilute the sample so that the expected range of concentrations fall within the detection range of this kit.</p> <p>If the expected range of concentration is unknown, a pilot test should be conducted to decide the optimal dilution ratio for your samples.</p> <p>Some PubMed article(s) citing the expression level of this target are as follows:</p> <p>Boster Bio's internal QC testing used:</p> <p>User needs to optimize the dilution ratio for this antibody.</p>

Anti-human CD33/Siglec 3 Monoclonal Antibody Biotin Conjugated, Flow Validated (FC01508-Biotin) Images



Monocytes gated human PBMCs stained with anti-human CD33 biotin followed by SA-PE (clone MW53, red histogram). Blue histogram is for the monocytes gated PBMCs stained with IgG1 (MOPC31C) biotin conjugated isotype control followed by staining with SA-PE.

Submit a product review to Biocompare.com

Submit a review of this product to Biocompare.com to receive a \$20 Amazon.com giftcard! Your reviews help your fellow scientists make the right decisions. Thank you for your contribution.



Anti-human CD33/Siglec 3 Monoclonal Antibody Biotin Conjugated, Flow Validated