

Anti-Beta-Catenin 1 (CTNNB1) Rabbit Monoclonal Antibody, Clone#RM276

Catalog Number: M00004-3

Overview

Product Name	Anti-Beta-Catenin 1 (CTNNB1) Rabbit Monoclonal Antibody, Clone#RM276
Reactive Species	Human
Description	Boster Bio Anti-Beta-Catenin 1 (CTNNB1) Rabbit Monoclonal Antibody, Clone#RM276 (Catalog # M00004-3). Tested in IHC, WB applications. This antibody reacts with Human.
Application	IHC, WB
Clonality	Monoclonal RM276
Formulation	50% Glycerol/PBS with 1% BSA and 0.09% sodium azide
Storage Instructions	Store at -20°C for one year. Avoid repeated freeze-thaw cycles.
Host	Rabbit
Uniprot ID	P35222

Technical Details

Immunogen	A peptide corresponding to human Beta-Catenin.
Predicted Reactive Species	Mouse, Rat
Cross Reactivity	This antibody reacts to human Beta-Catenin (Catenin beta-1). This antibody may also react to mouse or rat Beta-Catenin, as predicted by immunogen homology.
Isotype	Rabbit IgG
Form	Liquid
Concentration	0.5-1mg/ml, actual concentration vary by lot. Use suggested dilution ratio to decide dilution procedure.
Purification	Protein A affinity purified from an animal origin-free culture supernatant
Suggested Dilutions	<p>Dilute the sample so that the expected range of concentrations fall within the detection range of this kit.</p> <p>If the expected range of concentration is unknown, a pilot test should be conducted to decide the optimal dilution ratio for your samples.</p> <p>Some PubMed article(s) citing the expression level of this target are as follows:</p> <p>Boster Bio's internal QC testing used:</p> <p>Immunohistochemistry (IHC): 1:500-1:1000 dilution</p> <p>WB: 1:400-1:1000 dilution.</p>

Anti-Beta-Catenin 1 (CTNNB1) Rabbit Monoclonal Antibody, Clone#RM276 (M00004-3) Images

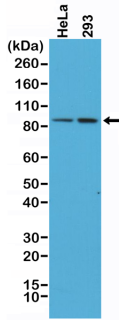


Figure 1. Western Blotting result
Western Blot of HeLa and 293 cells lysates using
Anti-β-Catenin Rabbit Monoclonal Antibody (Clone RM276) at
a 1:400 dilution.

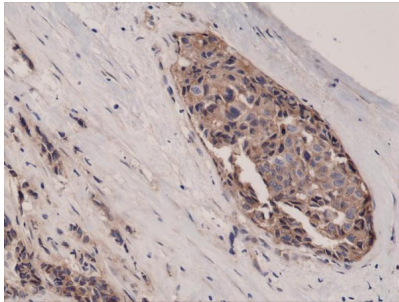


Figure 2. IHC result
Immunohistochemical staining of formalin fixed and paraffin
embedded human breast cancer tissue sections using
Anti-β-Catenin Rabbit Monoclonal Antibody (Clone RM276) at
a 1:1000 dilution.

5 Publications Citing This Product

1. PubMed ID: 32519176, Piao HY,Guo S,Wang Y,Zhang J.Exosome-transmitted lncRNA PCGEM1 promotes invasive and metastasis in gastric cancer by maintaining the stability of SNAI1.Clin Transl Oncol.2020 Jun 9.doi:10.1007/s12094-020-02412-9.Epub ahead of print.PMID:32519176.
2. PubMed ID: 26918831, Anti-cancer drug 3, 3%u2032-diindolylmethane activates Wnt4 signaling to enhance gastric cancer cell stemness and tumorigenesis
3. PubMed ID: 18681964, Dark Aberrant Crypt Foci with activated Wnt pathway are related to tumorigenesis in the colon of AOM-treated rat

Visit [bosterbio.com/anti-beta-catenin-1-ctnnb1-rabbit-monoclonal-antibody-clone-rm276-m00004-3-boster.html](https://www.bosterbio.com/anti-beta-catenin-1-ctnnb1-rabbit-monoclonal-antibody-clone-rm276-m00004-3-boster.html) to see all 5 publications.

Submit a product review to Biocompare.com

Submit a review of this product to Biocompare.com to receive a \$20 Amazon.com giftcard! Your reviews help your fellow scientists make the right decisions. Thank you for your contribution.



Anti-Beta-Catenin 1 (CTNNB1) Rabbit Monoclonal Antibody, Clone#RM276